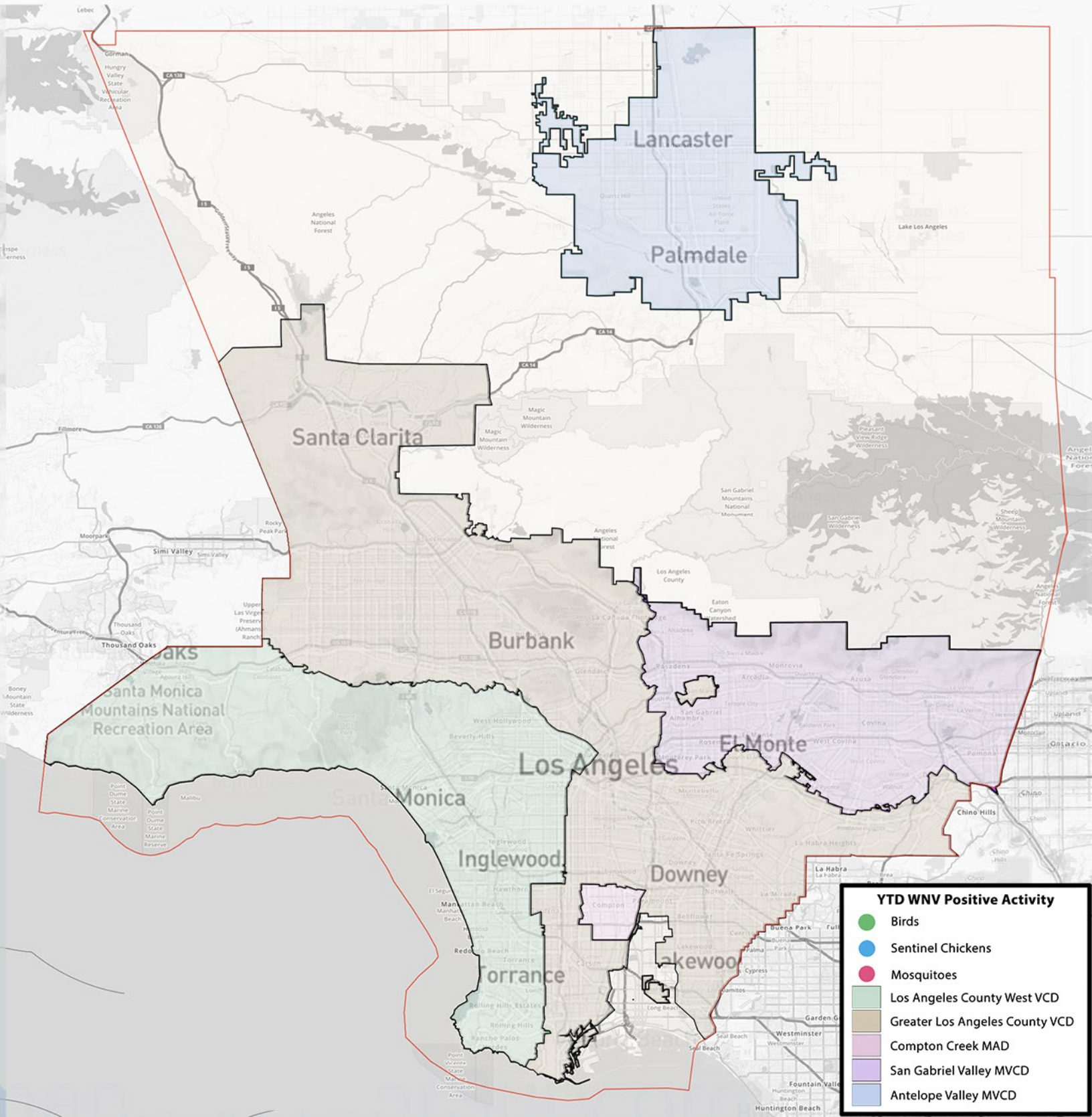


West Nile Virus Activity 2026

Los Angeles County

| Total YTD Activity | Dead Birds | Sentinel Chickens | Mosquito Pools |
|--------------------|------------|-------------------|----------------|
| 0 | 0 | 0 | 0 |



YTD WNV Positive Activity

- Birds
- Sentinel Chickens
- Mosquitoes
- Los Angeles County West VCD
- Greater Los Angeles County VCD
- Compton Creek MAD
- San Gabriel Valley MVCD
- Antelope Valley MVCD

West Nile Virus Activity 2026
Los Angeles County West Vector Control District
As of 4/28/26

| City/Community | Dead Birds | | Sentinel Chickens | | Mosquito Pools | |
|----------------|-------------------|-------------------------|-------------------|-------------------------|-------------------|-------------------------|
| | Positives to Date | Date of First Detection | Positives to Date | Date of First Detection | Positives to Date | Date of First Detection |
| | | | | | | |

YTD West Nile Virus Activity Within the District

| Total YTD Activity - 2026 | Dead Birds | Sentinel Chickens | Mosquito Pools |
|---------------------------|------------|-------------------|----------------|
| 0 | 0 | 0 | 0 |