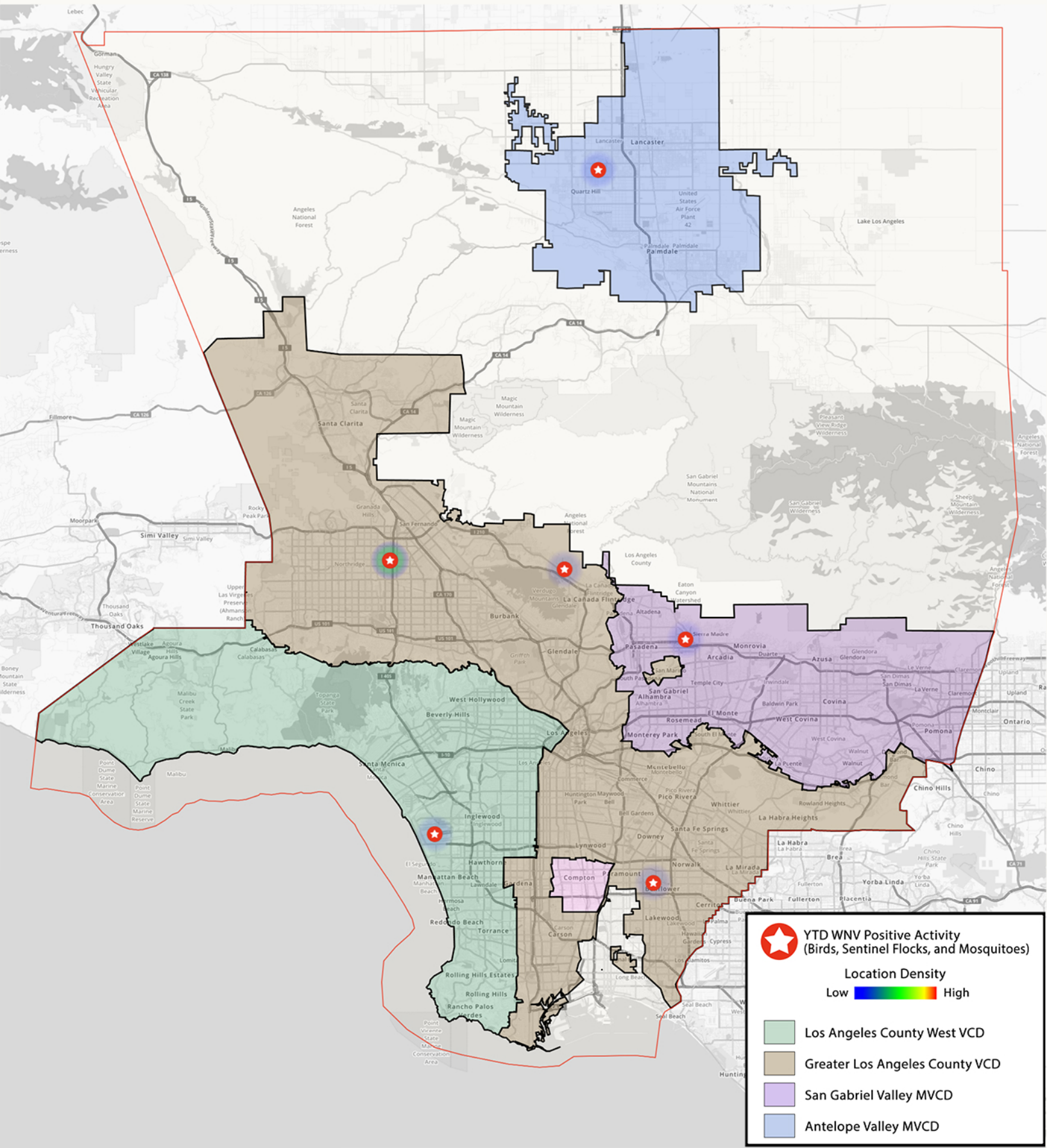


2022 Los Angeles County West Nile Virus Positive Environmental Indicators by City



**2022 Los Angeles County West Nile Positive
Environmental Indicators by City/Community**
Dead Bird, Sentinel Flock, and Mosquito Infections
As of 6/21/22

City/Community	Dead Birds		Sentinel Chickens		Mosquito Pools	
	# of Positives to Date	Date First Reported	# of Positives to Date	Date First Reported	# of Positives to Date	Date First Reported
Bellflower					1	6/14/2022
La Crescenta	1	6/21/2022				
Lancaster					1	6/21/2022
Los Angeles**	1	6/14/2022				
North Hills	3	6/7/2022				
Pasadena					1	6/21/2022

YTD West Nile Virus Activity for Los Angeles County

Total YTD West Nile Virus Activity for Los Angeles County	WNV Positive Dead Birds	New Positives	WNV Positive Sentinel Chickens	New Positives	WNV Positive Mosquito Pools	New Positives
8	5	1	0	0	3	2

YTD West Nile Virus Activity Within the District

YTD West Nile Virus Activity Within the District	WNV Positive Dead Birds	New Positives	WNV Positive Sentinel Chickens	New Positives	WNV Positive Mosquito Pools	New Positives
1	1	0	0	0	0	0

* Area served by Los Angeles County West Vector Control District

** Portion of area served by Los Angeles County West Vector Control District

Bold Text – Recently confirmed infections