



**NOTICE OF THE REGULAR MEETING
OF THE BOARD OF TRUSTEES
OF THE LOS ANGELES COUNTY WEST
VECTOR & VECTOR-BORNE DISEASE
CONTROL DISTRICT**

**July 12, 2018
6750 Centinela Ave.
Culver City, CA 90230
7:30 p.m.**

**Los Angeles County West Vector
& Vector-Borne Disease Control District**
6750 Centinela Avenue, Culver City, California 90230
(310) 915-7370 ext. 223 Email: rsaviskas@lawestvector.org

BOARD OF TRUSTEES

President

JAMES OSBORNE
Lawndale

Vice President

KURT WEIDEMAN
Torrance

Secretary

OLIVIA VALENTINE
Hawthorne

BILL AILOR
Palos Verdes Estates

BARBARA BARSOCCHINI
Malibu

CHAD BLOUIN
West Hollywood

S.W. DiSALVO
Beverly Hills

JOHN FRAZEE
Manhattan Beach

SUZANNE FUENTES
El Segundo

JAY GARACOCHEA
Culver City

JIM GAZELEY
Lomita

NANCY GREENSTEIN
Santa Monica

ELIZABETH SALA
Rancho Palos Verdes

VELVETH SCHMITZ
Rolling Hills Estates

JOAN YACOVONE
Agoura Hills

ROBERT SAVISKAS
Executive Director

**NOTICE OF THE NEXT REGULAR MEETING
OF THE BOARD OF TRUSTEES
OF THE LOS ANGELES COUNTY WEST
VECTOR & VECTOR-BORNE CONTROL
DISTRICT**

**July 12, 2018
6750 Centinela Ave.
Culver City, CA 90230
7:30 p.m.**

**LOS ANGELES COUNTY WEST VECTOR
& VECTOR-BORNE DISEASE CONTROL DISTRICT
REGULAR MEETING OF THE BOARD OF TRUSTEES
(310) 915-7370 ext. 223**

**July 12, 2018
6750 Centinela Ave.
Culver City, CA 90230
7:30 p.m.**

AGENDA

NOTICE TO THE PUBLIC

Residents who live or own property within the District who wish to comment on any of the listed agenda items are requested to fill out the "Request to Comment on Listed Agenda Items" form. This form may be obtained from the Executive Director and should be returned to him prior to the beginning of the regular meeting. Agenda items designated by members of the public for comment will be noted and the individual listed will be allowed to address the Board at the time specified for comments on the agenda. You must be a resident or property owner within the boundaries of the District to address the Board. Comments can only be made on items listed on the agenda for action by the Board. Pursuant the Brown Act, Government Code Section 54950 et seq., the Board may not take action or discuss any item that is not listed on the agenda. The Board Chairperson has set a limit of three minutes each for those who wish to address the Board. Those who wish to speak to items being considered in Closed Session will be given the opportunity to do so prior to the Board going into closed session.

- i. Roll Call**
- ii. Correspondence**
- iii. Public Comments**

1. Approve the 2018-2019 Budget & Benefit Assessment Resolution	
Staff Report:	Robert Saviskas, Executive Director
Details & Reference Documents:	See Section #1
Recommended Action:	Approve

2. Minutes of the May 10, 2018 Board of Trustees Meeting	
Staff Report:	None Scheduled
Recommended Action:	Approve

3. Executive Director's Report for June 2018	
Staff Report:	Robert Saviskas, Executive Director
Recommended Action:	Advisory and/or Action (as needed)
3A) WNV Update	Advisory
3B) Public Education Program	Advisory
3C) Field Operations Program	Advisory
3D) Vector Ecology Program	Advisory

4. Financial Report for May-June 2018	
A) Bills and Salaries	
Staff Report:	None Scheduled
Recommended Action:	Approve

5. Construction Update for 6720-6740 Centinela Avenue.	
Staff Report:	Robert Saviskas, Executive Director
Recommended Action:	Advisory

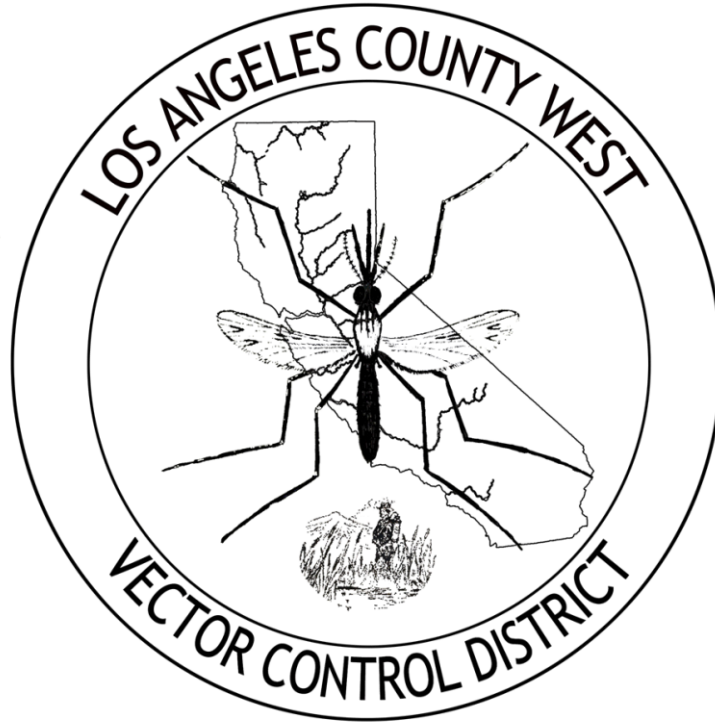
6. Board of Trustees Comments	
Staff Report:	None Scheduled
Recommended Action:	As determined by the Board

7. Motion to adjourn	
Staff Report:	None Scheduled
Recommended Action:	Approve

1. Approve the 2018-2019 Budget & Benefit Assessment Resolution

Staff Report:	Robert Saviskas, Executive Director
Details & Reference Documents:	See Section #1
Recommended Action:	Approve

--



2018-2019 FY

**BUDGET
&
BENEFIT ASSESSMENT**

EXECUTIVE SUMMARY
2018-2019 Budget

Category 1: Benefit Assessment Charge for 2018-2019 is \$10.81:

The \$10.81 charge /parcel/for FY 2018-2019 is reduced from the previous year's charge of \$10.97.

Per Year Assessment for 2018-2019: For the \$10.97 per household per year residents of the District receive the following:

- Property Inspections
- Submit unlimited Service Requests
- Professional help from state-certified specialists
- Informational pamphlets, brochures and downloadable content
- Staffing at your next community event
- Vector ecologists monitoring diseases in your community
- Vector Control Specialists reducing breeding sources in your community
- Mosquito fish for your ornamental fountain, ponds, and inoperative pools
- Speakers for your next event
- School and classroom visits by educational outreach coordinators

To put the assessment charge into perspective:

It would cost each household in our District \$20.52 to buy three cans of insecticide: one to spray for mosquitoes, one for bees (Africanized honeybees) and stinging insects, and one for ants (red imported fire ants).



Mosquito Spray:	\$7.55
Bee & Hornet Spray:	\$5.98
<u>Ant Spray:</u>	<u>\$6.99</u>
Total:	\$20.52

Category 2: Cost of Living Adjustment (COLA):

The CPI (consumer price index) for Southern California for the previous year was 4.1% (see attached).

Recommendation: Approve a 3.8% COLA:

It is recommended that a 3.8% COLA (cost of living adjustment) be approved by the Board for all employees for 2018-2019 fiscal year to keep pace with inflation. The Board may increase or decrease this recommended COLA as they see appropriate for the 2018-2019 Fiscal Year.

General Background:

Mosquito and vector control is necessary on a continuous routine and area-wide basis to protect the health, enhance the economic development, and maintain the recreational use and enjoyment of outdoor living.

The Los Angeles County West Vector Control District (District) was formed in 1944 and consisted of only 5 square miles. Over the next 72 years, there have been numerous annexations into the District. At the present time, the District covers over 720 square miles, contains 23 cities and unincorporated territory of the County of Los Angeles, and provided services for over 4,800,000 people. This makes the Los Angeles County West Vector & Vector-Borne Disease Control District the second largest vector control district in the state of California by population served.

The District includes the cities of Agoura Hills, Beverly Hills, Calabasas, Culver City, El Segundo, Hawthorne, Hermosa Beach, Hidden Hills, Inglewood, Lawndale, Lomita, the westerly portion of Los Angeles City, Malibu, Manhattan Beach, Palos Verdes Estates, Rancho Palos Verdes, Redondo Beach, Rolling Hills, Rolling Hills Estates, Santa Monica, Torrance, West Hollywood, Westlake Village, and unincorporated territory of the County of Los Angeles.

The District is governed by a Board of Trustees. Each city and county within the boundaries of the District may appoint a representative to serve on the Board.

As provided for in California Health and Safety Code (§ 2200 et seq.), the District Board may take all necessary or proper steps for the control of mosquitoes, Africanized honeybees, ticks, red imported fire ants, or other vectors, either in the district or in territory not in the district but so situated with respect to the district that or other vectors may disperse from the territory into the district; abate as nuisances all standing water and other breeding places for mosquitoes or other vectors, either in the district or in territory not in the district but so situated with respect to the district that mosquitoes or other vectors from the territory disperse into the district; enter upon any property either within the district or so reasonably adjacent thereto that vectors may disperse into the district, for any of the following purposes: (1) to inspect to ascertain the presence of vectors or their breeding places, (2) to abate public nuisances in accordance with the California Health & Safety Code and local nuisance abatement ordinances, either directly or by giving notice to the property owner to abate nuisance, (3) to ascertain if a notice to abate vectors has been complied with, and (4) to treat property with appropriate physical, chemical, or biological control measures; and do any and all things necessary for, or incident to, the powers granted by, and to carry out the objects specified in, this chapter (California Health and Safety Code, Chapter 5). California Health & Safety Code has defined "vector" as any animal capable of transmitting the causative agent of human disease or capable of producing human discomfort or injury, including, but not limited to, mosquitoes, Africanized honeybees, ticks, Red Imported Fire Ants, flies, mites, other insects, and rats, but not including any domestic animal. These provisions provide the authority for policies adopted by the Board of Trustees under which the District operates.

Revenue:

Following Proposition 13, the major sources of revenue for the District were property taxes and Special District Augmentation Funds. Since 1993, the District's property taxes have been reduced by approximately 60% and the Special District Augmentation Fund has been eliminated.

To alleviate the fiscal problems of the District and gain control over budgeting, to develop and maintain an adequate vector control program with sufficient staff and equipment and provide the necessary facilities, the Board of Trustees took the necessary action to place a proposition on the November 6, 1984, General Election ballot. Proposition Y, if passed by two thirds of those voting on the Proposition, would have authorized the District to levy an annual special tax of not more than \$3.00 per parcel of land within the District. The proposition received 64.72% of the votes cast. Although this vote (64.72%) did not meet the required two-thirds, it certainly did indicate the voters' support for the District's activities and the proposed improvement of the mosquito control program.

Since the November 1984 election, the law governing mosquito abatement and vector control Districts has been amended. Chapter 5, Article 4, Section 2270(1) of the California Health and Safety Code now provides that "The district may levy, by resolution or ordinance, a service charge against any or all parcels of land within the District to pay for the cost of vector surveillance and control. The schedule of charges shall be made, reviewed, and adopted annually after notice and hearing in connection with the schedule."

California Health and Safety Code Section 2291.2 authorize the District to impose an assessment for vector surveillance and control projects that are of common benefit to all residents and the zones in its jurisdiction.

On May 9, 1996, the Board of Trustees of the Los Angeles County West Vector Control District passed Resolution 1-96 declaring its intention to undertake vector surveillance and control projects of common benefit to the District as a whole and to special zones within the District and to adopt an assessment in connection with this undertaking. The Board, by Resolution 96-2, replaced the yearly service charge format with an assessment format. Under the assessment format, over 98% of all parcels within the District can be assessed an amount not to exceed \$20.00 per parcel per year. Approximately 1% of the parcels within the District can be assessed an amount not to exceed \$100,000 per parcel per year. Each year during the budget process, the Board establishes the amount of the assessment for the next fiscal year.

Los Angeles County West Vector Control District

ACCOUNT CODE DESCRIPTIONS

Salaries & Payroll Taxes

5010-5020 Salaries & Payroll Taxes: Provides for employees' salaries and associated payroll taxes that are the responsibility of the employer.

Maintenance & Operations

5030 Retirement: Provides for the employer's portion of retirement contributions.

5035-5036 Health Benefits: Provides for employees' medical-hospitalization, dental, and optical coverage.

5038 Retirees Group Medical Insurance (OPEB): Annual accrued for OPEB Trust Fund for retirees' medical.

5040 Medical (On-the-Job Injuries): Provides for the payment of medical bills for on-the-job injuries that do not qualify for workers' compensation claims.

5041- 5042 Annual & Pre-Employment Physicals: Provides for annual and pre-employment physicals. Also provides for bee venom sensitivity testing.

5051 Household: Provides for basic cleaning supplies and materials.

5070 Uniforms: Provides for the rental of uniforms for regular full-time and seasonal employees. Also provides for boots, towels, lab coats, and accessory uniform wear.

5101-5108 Insurance: The District participates in a self-insurance program with other similar agencies known as the Vector Control Joint Powers Agency (VCJPA). Provides premium payments for pooled automotive, liability (including employment, bonding, and errors & omissions), property, and workers' compensation insurance. Premiums are based on individual and group performance.

5115-5116 Vector Ecology Field & Laboratory Services: Provided for field and laboratory equipment and supplies. Also provides for occasional outside laboratory services.

5117 Africanized Honeybee Fund: Hotline & 24 hour live operator service. Provides funds for the District's Africanized honeybee hotline & 24-hour live operator service.

5118 Red Imported Fire Ants (RIFA) Program Fund: Provides for the expenses associated with the RIFA program.

5121-5127 Maintenance & Equipment: Provides for materials, parts, supplies and equipment to maintain, service and repair of vehicles; including tires, cleaning solvents, etc.

- 5131-5135 Building Maintenance: Provides for equipment, supplies, materials and equipment repairs and services to maintain a variety of mechanical appliances associated with the District's facility. Provides for contractual services for weekly/monthly servicing, maintaining, and repairing of facility related items such as janitorial, elevator, etc.
- 5151-5154 Memberships: Provides for District membership in the Mosquito and Vector Control Association of California (MVCAC), American Mosquito Control Association (AMCA), Society of Vector Ecologists (SOVE).
- 5161-5163 Training, Meetings, & Conferences: Provides for courses, workshops, seminars, and state require continuing education courses for staff and to improve staff job-related work skills. Also provides for conferences for Trustees and for the in-lieu of expenses payment to Trustees for monthly meetings.
- 5170 Office Expenses: Provides for all stationery supplies, postage, photocopy and computer related supplies.
- 5171 Educational Materials & Equipment: Provides for materials, supplies, equipment and services for providing public education materials (brochures, pamphlets, etc.) and programs for schools, agencies, community service groups and the general public.
- 5181 Research Fund: Provides for University affiliated research projects that benefit and address public health, vector, and vector-borne disease problems within the District.
- 5182-5188 Professional & Specialized Services: Provides for a variety of professional services, including annual audit; bookkeeping; general legal counsel; computer service support; computer database program development, installation, and maintenance; security; and legal & public notifications and research projects, photographic services for public education.
- 5190-5193 L. A. County Auditor-Controller Costs & Fees: Provides for the annual anticipated expenses incurred for the collection and processing the District's levy of the general property taxes and benefit assessment. The District is charged on a per parcel basis for the production and update of the Tax Collector's magnetic tape and for the collection of the assessment.
- 5195 LAFCO Charges: Local Agency Formation Commission annual charge for funding the net operating expenses for this agency.
- 5232 Insecticides: Provides for chemicals and materials needed to control mosquitoes, black flies, midges, AHB, Imported Red Fire Ants and other vectors within the District's current scope of commitment and responsibility to the public.
- 5236 Safety: Provides for safety related items such as the maintenance and replacement of respirators, underground gas detectors, back braces, etc.
- 5238 Hazardous Waste: Provides for the disposal of laboratory, automotive, general

facility waste produces, and permit. Also set aside in this category are funds for a pending lawsuit settlement involving hazardous waste disposal (see comments section under this line item).

- 5251-5254 Transportation: Provides for gasoline, motor oil, towing, parking fees and other miscellaneous expenses associated with the operation of District vehicles.
- 5261-5267 Utilities: Provides for electricity, water, natural gas, telephone, and other utility related services.
- 5270 Refuse Collection: Provides for the disposal of refuse generated by District operations.
- 5275 Communications: Provides for general communication needs such as vehicle mounted mobile telephones, Teletrac, pagers, the District's in-house website and source provider, etc.
- 5281 Fire and Security: Provides for the monitoring service, maintenance, and repairs of the District's fire and security system.

ACCOUNT CODE DESCRIPTIONS

Fixed Assets

Fixed assets used in governmental fund type operations are accounted for in the General Fixed Assets Group. The General Fixed Asset Group are assets which cost more than \$400 and have a useful life of over three years. The cost of these assets are charged against specific fixed asset operating funds in the year of acquisition.

It has been the general practice of the District to budget for specific fixed assets that are anticipated for each fiscal year. Additionally, general funds have also been established for unexpected additions and/or the accelerated replacement of existing fixed assets (air conditioning units, computers, etc.). General type funds in the fixed asset group that are not used are rolled over to the following fiscal year's budget. In doing so, these general type funds remain funded and do not require additional offsetting revenue to be generated in the following fiscal year.

- 5410 Land: Provides for the acquisition and general improvement of land for the operation of the District.
- 5416 Structure & Improvements: Provides for building, construction and improvements in or to existing District facility.
- 5420 Tanks: Provides for the replacement and addition of mosquito fish holding and breeding units.
- 5425 Vehicle Replacement Fund: Provides for the replacement and addition of District vehicles to the fleet.

- 5430 Office Equipment: Provides for the acquisition or replacement of office equipment, major appliances and fixtures that are in a state of general deterioration, disrepair, or in need of upgrading in order to maintain the operations current and in good working order.
- 5435 Field & Spray Equipment: Provides for the procurement of spray tanks, specialized pressurized spray units, ultra-low volume spray units, etc.
- 5440 Equipment & Tools: Provides for the general replacement, upgrade and/or addition of equipment and tools as needed to maintain the operations current and the facility in good working order.
- 5445 Communications Equipment: Provides for the general replacement, upgrade and/or addition of communications equipment as needed to maintain the operations current and in good working order.
- 5446 Educational Equipment & Materials: Provides for the acquisition of equipment needed to produce and/or display information materials (i.e. video production, exhibit accessories, and procurement of specialized educational materials such as biological supply house models).
- 5450 Entomology & Laboratory Equipment: Provides for the general replacement and/or addition of equipment as needed to maintain the laboratory and operations in good working order.

BUDGET (2018-2019)				
		2016-2017	2017-2018	2018-2019
A	Salaries	3,427,707	3,797,615	3,970,768
B	Maintenance & Operations	2,886,648	3,118,073	3,228,843
C	Fixed Assets	1,194,381	2,378,205	2,622,410
D	Total Estimated Budget	7,508,736	9,293,893	9,822,021
BUDGET PLUS RESERVES				
		2016-2017	2017-2018	2018-2019
E	Total Estimated Budget (from Line D)	7,508,736	9,293,893	9,822,021
F	General Reserves (California Health & Safety Codes limits general reserves to be no greater than 60% of estimated budget)	1,914,727	2,788,167	2,455,525
G	Unappropriated Reserves (California Health & Safety Codes limits unappropriated reserves to be no greater than 25% of estimated budget)	750,876	1,394,083	258,612
H	Total Estimated Budget & Reserves Needed	10,174,339	13,476,143	12,536,158
ESTIMATED REVENUES & CASH				
		2016-2017	2017-2018	2018-2019
I	Estimated Cash in District Accounts on June 30 th	3,355,969	6,290,935	5,129,428
J	Estimated Revenue from Property Taxes (Secured, Unsecured, etc.)	988,047	995,965	998,865
K	Estimated Interest Income	16,842	25,842	26,882
L	Est. Revenue from Assessment Zones A, B, C, & D	216,829	316,800	316,800
M	Total Estimated Revenues & Cash on June 30 th (total of I through L)	4,577,687	7,629,542	6,471,975
2016-2017 BENEFIT ASSESSMENT (CATEGORIES 1-3)				
		2016-2017	2017-2018	2018-2019
N	Total Estimated Budget & Reserves Needed (line H above)	10,174,339	13,476,143	12,536,158
O	Total Estimated Revenues & Cash on June 30 th (line M above)	4,577,687	7,629,542	6,471,748
P	Shortfall: Amount to be raised by Benefit Assessment from Categories 1-3	(line N minus line O) 5,596,652	(line N minus line O) 5,846,601	(line N minus line O) 6,064,410
Q	Base Assessment for all parcels in Categories 1-3 to raise total shortfall amount needed on line P (Categories 1-3 comprise 98% of all parcels)	10.63/parcel/for FY 2016-2017	10.97/parcel/for FY 2017- 2018	10.81/parcel/for FY 2018-2019

SALARIES						
Acct. No.	Item	FY 17-18 Budget	FY 17-18 Projected Actual	FY 18-19 Budget	Increase (Decrease) FY 17-18 Budget vs. FY 18-19 Budget	Comments Basis for Increase or (Decrease)
5010	Salaries	3,729,715	3,759,988	3,902,868	173,153	3.8% COLA Increase (CPI for Los Angeles for 2017 was 4.1%)
5020	Payroll Taxes	67,900	63,887	67,900	0	Projected District payroll tax obligations (Social Security, Medicare, SUI, etc.)
	TOTALS	3,797,615	3,823,875	3,970,768	173,153	

Budget (18-19) (Master)

RETIREMENT

Acct. No.	Item	FY 17-18 Budget	FY 17-18 Projected Actual	FY 18-19 Budget	Increase (Decrease) FY 17-18 Budget vs. FY 18-19 Budget	Comments Basis for Increase or (Decrease)
5030	Retirement	438,995	423,943	438,995	0	
	TOTALS	438,995	423,943	438,995	0	

MEDICAL						
Acct. No.	Item	FY 17-18 Budget	FY 17-18 Projected Actual	FY 18-19 Budget	Increase (Decrease) FY 17-18 Budget vs. FY 18-19 Budget	Comments Basis for Increase or (Decrease)
5035	Group Medical Insurance	501,327	509,081	553,400	52,073	Premiums for employees are capped at the cost of HMO coverage. Employees must personally pay any premium amount above that for preferred provider plans.
5036	Dental and Vision	79,221	72,332	79,221	0	-
5038	Retirees Group Medical Insurance (OPEB) Annual Accrued	60,000	60,000	60,000	0	Annual accrued expense for OPEB Trust Fund for retirees' medical (annual expense).
5040	Medical: On the Job Injuries	2,000	1,458	2,000	0	-
5042	Employee Physicals	2,000	1,237	2,000	0	-
	TOTALS	644,548	644,108	696,621	52,073	

AZ

CLOTHING & HOUSEHOLD

Acct. No.	Item	FY 17-18 Budget	FY 17-18 Projected Actual	FY 18-19 Budget	Increase (Decrease) FY 17-18 Budget vs. FY 18-19 Budget	Comments Basis for Increase or (Decrease)
5051	Household	12,000	10,669	12,000	0	-
5070	Uniforms	39,778	41,724	45,300	5,522	Projected cost increase for 2018-2019
	TOTALS	51,778	52,393	57,300	5,522	

INSURANCE						
Acct. No.	Item	FY 17-18 Budget	FY 17-18 Projected Actual	FY 18-19 Budget	Increase (Decrease) FY 17-18 Budget vs. FY 18-19 Budget	Comments Basis for Increase or (Decrease)
5101	Workers' Compensation	143,350	143,350	140,830	(2,520)	Cost set by the Vector Control Joint Powers Association (VCJPA) based on the collective group performance of all 41-member districts (self-insured programs).
5102	Liability	59,781	59,781	64,701	4,920	Cost set by the Vector Control Joint Powers Association (VCJPA) based on the collective group performance of all 41-member districts (self-insured programs).
492051 03	Group Fidelity & Business Travel	854	854	854	0	Cost set by the Vector Control Joint Powers Association (VCJPA) based on the collective group performance of all 41-member districts (self-insured programs).
5104	Vehicle Accident Repairs (Vehicle Damage Only)	900	900	1,698	798	Cost set by the Vector Control Joint Powers Association (VCJPA) based on the collective group performance of all 41-member districts (self-insured programs).
5105	Property (including Boiler & Machinery Insurance)	8,773	8,773	10,168	1,395	Cost set by the Vector Control Joint Powers Association (VCJPA) based on the collective group performance of all 41-member districts (self-insured programs).
5108	General Fund	12,200	12,200	11,382	(818)	Administration fees by VCJPA to manage funds.
	TOTALS	225,858	225,858	229,633	3,775	

VECTOR ECOLOGY & LABORATORY

Acct. No.	Item	FY 17-18 Budget	FY 17-18 Projected Actual	FY 18-19 Budget	Increase (Decrease) FY 17-18 Budget vs. FY 18-19 Budget	Comments Basis for Increase or (Decrease)
5115	Vector Ecology/ Laboratory Supplies, Equip., & Outside Services	97,250	91,431	97,250	0	Projected costs to test and monitor for West Nile virus, Western Equine Encephalitis, St. Louis Encephalitis, Zika, and Lyme disease.
5117	Africanized Honeybee Fund (AHB) (Includes AHB 24 hour live outside answering service)	29,000	27,912	29,000	0	Africanized honeybee and string insect fund: 24/7 live response to bee calls, field equipment, pesticides, laboratory supplies/equipment, & public education materials
5118	Red Imported Fire Ants (RIFA) Program	10,000	9,336	10,000	0	Projected costs for traps, bait, advisory door hangers & educational pamphlets
	TOTALS	136,250	128,679	136,250	0	

MAINTENANCE & EQUIPMENT

Acct. No.	Item	FY 17-18 Budget	FY 17-18 Projected Actual	FY 18-19 Budget	Increase (Decrease) FY 17-18 Budget vs. FY 18-19 Budget	Comments Basis for Increase or (Decrease)
5121	Auto Parts/ Equip/Repair	60,000	49,681	60,000	0	-
5122	Tires	3,500	3,288	3,500	0	-
5127	Field Equipment, Repairs, & Supplies	30,000	26,857	30,000	0	-
	TOTALS	93,500	79,826	93,500	0	

BUILDING MAINTENANCE

Acct. No.	Item	FY 17-18 Budget	FY 17-18 Projected Actual	FY 18-19 Budget	Increase (Decrease) FY 17-18 Budget vs. FY 18-19 Budget	Comments Basis for Increase or (Decrease)
5131	Janitorial	17,600	19,555	28,555	10,955	Projected cost increase for 2018-2019
5135	Building Maintenance	35,000	37,577	42,000	7,000	Projected cost increase for 2018-2019
	TOTALS	52,600	57,132	70,555	17,955	

MEMBERSHIP DUES

Acct. No.	Item	FY 17-18 Budget	FY 17-18 Projected Actual	FY 18-19 Budget	Increase (Decrease) FY 17-18 Budget vs. FY 18-19 Budget	Comments Basis for Increase or (Decrease)
5151	MVCAC	8,900	9,425	9,900	1,000	-
5152	AMCA	550	550	550	0	-
5154	SOVE	200	200	200	0	-
	TOTALS	9650	10,175	10,650	1,000	

TRAINING, MEETINGS, & CONFERENCES

Acct. No.	Item	FY 17-18 Budget	FY 17-18 Projected Actual	FY 18-19 Budget	Increase (Decrease) FY 17-18 Budget vs. FY 18-19 Budget	Comments Basis for Increase or (Decrease)
5161	Board of Trustees in Lieu of Expenses	9,000	7,665	9,000	0	-
5162	Expenses (plaques, meeting refreshments etc.) - Trustees	10,000	3,535	10,000	0	-
5163	Conferences, Meetings, Training - Staff	20,000	19,322	20,000	0	-
	TOTALS	39,000	30,522	39,000	0	

OFFICE & EDUCATIONAL

Acct. No.	Item	FY 17-18 Budget	FY 17-18 Projected Actual	FY 18-19 Budget	Increase (Decrease) FY 17-18 Budget vs. FY 18-19 Budget	Comments Basis for Increase or (Decrease)
5170	Office Expenses	85,000	78,441	85,000	0	Projected normal office expenses
5171	Educational Materials & Equipment Fund	150,000	92,223	150,000	0	Public Education Fund: Used for expenses associated with continuing the public education outreach programs (brochures, educational material, displays, visual aids, PSAs, etc.). These costs are variable from year-to-year due to the timing of replacing depleted stock and inventory, and printing new brochures and educational material.
	TOTALS	235,000	170,664	235,000	0	

PROFESSIONAL SERVICES

Acct. No.	Item	FY 17-18 Budget	FY 17-18 Projected Actual	FY 18-19 Budget	Increase (Decrease) FY 17-18 Budget vs. FY 18-19 Budget	Comments Basis for Increase or (Decrease)
5180	Outside Services & Consultants Fund	85,000	73,818	85,000	0	
5183	Annual Independent Audit	15,555	12,850	15,555	0	
5184	Legal Services Fund	100,000	9,121	100,000	0	General Fund: Legal Services (may vary greatly from year-to-year, so this category is fully funded each year to accommodate any needs)
5186	Bookkeeping	27,800	25,800	27,800	0	
5187	Public Notices	4,000	1,246	4,000	0	
5188	Photo Service & Equipment	4,500	2,908	4,500	0	
	TOTALS	227,855	125,743	227,855	0	

**PROFESSIONAL SERVICES
(continued)**

Acct. No.	Item	FY 17-18 Budget	FY 17-18 Projected Actual	FY 18-19 Budget	Increase (Decrease) FY 17-18 Budget vs. FY 18-19 Budget	Comments Basis for Increase or (Decrease)
5181	Research Fund	50,000	0	50,000	0	<p><u>General:</u> This fund is for University affiliated research projects that benefit and address public health, vector, and vector-borne disease problems within the District.</p> <p>These are research projects in conjunction with universities throughout the nation. This program has been ongoing for over 20 years. These research projects have included wetlands mosquito control, mosquito migration studies, ticks and Lyme disease research, West Nile virus, dog heartworm, biting midges, and biting black flies with UC Berkeley, UC Davis, and UC Riverside to name a few. This university affiliation research program pays great dividends for the District by developing and maintaining a positive and invaluable profession relationship with these institutions and their expert staff. The exchange of knowledge and experience while addressing and solving ongoing public health problems and newly emerging diseases, enriches the university, District staff, university students, and the general public.</p>
	TOTALS	50,000	0	50,000	0	

PROFESSIONAL SERVICES

(CONTINUED)

Acct. No.	Item	FY 17-18 Budget	FY 17-18 Projected Actual	FY 18-19 Budget	Increase (Decrease) FY 17-18 Budget vs. FY 18-19 Budget	Comments Basis for Increase or (Decrease)
5190	L.A. Co. Systems Div. Assessment Posting and Systems Fee	62,000	58,747	62,000	0	
5191	L.A. Co. Auditor-Controller's Benefit Assessment Collection Fee	140,000	134,000	140,000	0	
5193	L.A. Co. Auditor-Controller's Property Tax Collection Fee	13,500	12,889	13,500	0	
5195	LAFCO Fee	1,800	1,800	1,800	0	
	TOTALS	217,300	207,436	217,300	0	

INSECTICIDE & SAFETY EXPENSES

Acct. No.	Item	FY 17-18 Budget	FY 17-18 Projected Actual	FY 18-19 Budget	Increase (Decrease) FY 17-18 Budget vs. FY 18-19 Budget	Comments Basis for Increase or (Decrease)
5232	Insecticide	489,239	455,808	489,239	0	Projected Insecticide Expense
5237	NPDES Permit	18,000	16,000	18,000	0	Projected NPDES (National Pollutant Discharge Elimination System) permits & cooperative agreement fees with the MVCAC. This category does not include manpower, program equipment, paperwork, data processing, and all the other elements that may be required under the permit now and in the future.
5236	Safety	9,000	7,499	9,000	0	-
5238	Hazardous Waste	1,000	0	1,000	0	-
	TOTALS	517,239	479,307	517,239	0	

TRANSPORTATION

Acct. No.	Item	FY 17-18 Budget	FY 17-18 Projected Actual	FY 18-19 Budget	Increase (Decrease) FY 17-18 Budget vs. FY 18-19 Budget	Comments Basis for Increase or (Decrease)
5251	Gasoline	95,000	65,440	95,000	0	-
5254	Misc. (parking fees; towing charges; etc.)	4,000	610	4,000	0	-
	TOTALS	99,000	66,050	99,000	0	

UTILITIES

Acct. No.	Item	FY 17-18 Budget	FY 17-18 Projected Actual	FY 18-19 Budget	Increase (Decrease) FY 17-18 Budget vs. FY 18-19 Budget	Comments Basis for Increase or (Decrease)
5261	Gas	3,500	1,145	3,500	0	-
5264	Electricity & Water	50,000	34,240	50,000	0	-
5267	Telephone Service	39,000	33,045	39,000	0	-
5270	Refuse Collection	16,000	13,338	16,000	0	-
	TOTALS	98,500	81,768	98,500	0	

COMMUNICATIONS						
Acct. No.	Item	FY 17-18 Budget	FY 17-18 Projected Actual	FY 18-19 Budget	Increase (Decrease) FY 17-18 Budget vs. FY 18-19 Budget	Comments Basis for Increase or (Decrease)
5275	Communications	65,000	46,489	65,000	0	General operating cost for communication needs such as vehicle mounted mobile telephones, Teletrac, pagers, the District's in-house website and source provider, etc.
	TOTALS	65,000	46,489	65,000	0	

SECURITY SYSTEM						
Acct. No.	Item	FY 17-18 Budget	FY 17-18 Projected Actual	FY 18-19 Budget	Increase (Decrease) FY 17-18 Budget vs. FY 18-19 Budget	Comments Basis for Increase or (Decrease)
5281	Fire and Security System	17,000	9,560	17,000	0	-
	TOTALS	17,000	9,560	17,000	0	

FIXED ASSETS						
Acct. No.	Item	FY 17-18 Budget	FY 17-18 Projected Actual	FY 18-19 Budget	Increase (Decrease) FY 17-18 Budget vs. FY 18-19 Budget	Comments Basis for Increase or (Decrease)
5410	Land & Land Development	2,746,705	1,342,286	1,940,910	(805,795)	Phase III Construction costs to finish project.
	SUB-TOTALS	2,746,705	1,342,286	1,940,910	(805,795)	

FIXED ASSETS

(CONTINUED)

Acct. No.	Item	FY 17-18 Budget	FY 17-18 Projected Actual	FY 18-19 Budget	Increase (Decrease) FY 17-18 Budget vs. FY 18-19 Budget	Comments Basis for Increase or (Decrease)
5416	Structure & Improvement	150,000	41,022	150,000	0	Provides for building improvements and/or repairs to existing District facilities. General Operating Fund: \$150,000
5420	Tanks	282,000	150,000	132,000	(150,000)	Fund provides for the installation of multiple new mosquito breeding tanks (16) and pumping and filtration equipment on the roof of the new parking operations building and the repair and replacement of existing mosquito fish breeding tanks as needed.
5425	Vehicles Replacement Fund	150,000	0	150,000	0	Provides for the replacement and addition of vehicles to the fleet as needed. General fund: \$150,000.
	SUB-TOTALS	582,000	191,022	432,000	(150,000)	

FIXED ASSETS

(CONTINUED)

Acct. No.	Item	FY 17-18 Budget	FY 17-18 Projected Actual	FY 18-19 Budget	Increase (Decrease) FY 17-18 Budget vs. FY 18-19 Budget	Comments Basis for Increase or (Decrease)
5430	Office Equipment	40,000	9,579	40,000	0	- Provides for the acquisition and/or replacement of office equipment, major appliances, computers, fixtures, etc. that are in a state of general deterioration, disrepair, or in need of upgrading in order to maintain the equipment and operations current and in good working order. - General Operating Fund: \$40,000
5435	Field & Spray Equipment	9,500	4,300	9,500	0	- Provides for the purchase, repair & replacement of spray tanks, specialized pressurized spray units, ultra-low volume spray units, etc. General Operating Fund: \$9,500.
5440	Equipment & Tools	50,000	12,034	50,000	0	- Provides for the general replacement, upgrade and/or addition of new equipment and tools as needed to maintain the operations current and the facilities in good working order. General Operating Fund: \$50,000.
	SUB-TOTALS	99,500	25,913	99,500	0	

FIXED ASSETS
(CONTINUED)

Acct. No.	Item	FY 17-18 Budget	FY 17-18 Projected Actual	FY 18-19 Budget	Increase (Decrease) FY 17-18 Budget vs. FY 18-19 Budget	Comments Basis for Increase or (Decrease)
5445	Communication Equipment	100,000	21,033	100,000	0	- Provides for the general replacement, upgrade and/or addition of communications equipment as needed to maintain the operations current and in good working order. General Operating Fund: \$80,000
5446	Educational Equipment & Materials	20,000	6,997	20,000	0	- Provides for the acquisition of equipment needed to produce and/or display information materials (i.e. video production, exhibit accessories, display equipment, etc.) General Operating Fund: \$20,000.
	SUB-TOTALS	120,000	28,030	120,000	0	

FIXED ASSETS

(CONTINUED)

Acct. No.	Item	FY 17-18 Budget	FY 17-18 Projected Actual	FY 18-19 Budget	Increase (Decrease) FY 17-18 Budget vs. FY 18-19 Budget	Comments Basis for Increase or (Decrease)
5450	Entomology & Laboratory Equipment	30,000	4,885	30,000	0	- Provides for the general replacement and/or addition of equipment as needed to maintain the laboratory and operations in good working order. General Operating Fund: \$30,000.
	SUB-TOTALS	30,000	4,885	30,000	0	

Table 4. Consumer Price Index for All Urban Consumers (CPI-U): Selected areas, all items index

Table 4. Consumer Price Index for All Urban Consumers (CPI-U): Selected areas, all items index, May 2018 [1982-84=100, unless otherwise noted]							
Area	Pricing Schedule ⁽¹⁾	Percent change to May 2018 from:			Percent change to Apr. 2018 from:		
		May 2017	Mar. 2018	Apr. 2018	Apr. 2017	Feb. 2018	Mar. 2018
U.S. city average	M	2.8	0.8	0.4	2.5	0.6	0.4
Region and area size⁽²⁾							
Northeast	M	2.5	0.9	0.4	2.1	0.5	0.4
Northeast - Size Class A	M	2.2	0.6	0.2	2.0	0.5	0.4
Northeast - Size Class B/C⁽³⁾	M	2.9	1.2	0.7	2.3	0.6	0.5
New England⁽⁴⁾	M		0.9	0.4		0.7	0.4
Middle Atlantic⁽⁴⁾	M		0.9	0.4		0.5	0.4
Midwest	M	2.3	0.9	0.5	1.8	0.6	0.4
Midwest - Size Class A	M	2.3	1.0	0.5	1.8	0.6	0.5
Midwest - Size Class B/C⁽³⁾	M	2.0	0.9	0.5	1.4	0.6	0.4
East North Central⁽⁴⁾	M		1.0	0.5		0.6	0.5
West North Central⁽⁴⁾	M		0.8	0.6		0.5	0.2
South	M	2.7	0.7	0.3	2.4	0.6	0.4
South - Size Class A	M	3.1	0.8	0.4	2.7	0.4	0.4
South - Size Class B/C⁽³⁾	M	2.6	0.6	0.3	2.3	0.7	0.4
South Atlantic⁽⁴⁾	M		0.5	0.3		0.5	0.2
East South Central⁽⁴⁾	M		0.8	0.3		0.8	0.5
West South Central⁽⁴⁾	M		1.0	0.4		0.6	0.6
Selected local areas							
Chicago-Naperville-Elgin, IL-IN-WI	M	2.3	1.1	0.4	2.1	0.7	0.7
Los Angeles-Long Beach-Anaheim, CA	M	4.1	0.8	0.4	4.0	0.8	0.4
New York-Newark-Jersey City, NY-NJ-PA	M	2.2	0.7	0.4	1.9	0.3	0.3
Atlanta-Sandy Springs-Roswell, GA	2				2.8	0.2	

Vector Ecologist (I) and Vector Control Technician (I)

District	District Population	18-19 COLA %	18-19 Salary
Northwest MVCD	500,000	3.0	–
Orange County VCD	3,121,000	3.0	3,383
Greater LA County VCD	5,800,000	3.0	3,275
LA West Vector & VBDCD	4,800,000	3.8	3,206
San Gabriel Valley MVCD	1,360,000	3.25	2,857
Marin-Sonoma MSM	760,000	3.5	2,674
Contra-Costa MVCD	1,052,000	3.1	2,583
Coachella Valley MVCD	350,000	2.0	2,531
Sacramento-Yolo MVCD	1,700,000	3.2	2,355

Vector Ecologist (II) and Vector Control Technician (II)

District	District Population	18-19 COLA %	18-19 Salary
Marin-Sonoma MSM	760,000	3.5	7,202
Contra-Costa MVCD	1,052,000	3.1	6,914
Orange County VCD	3,121,000	3.0	6,850
Greater LA County VCD	5,800,000	3.0	6,610
LA West Vector & VBDCD	4,800,000	3.8	6,469
San Gabriel Valley MVCD	1,360,000	3.25	6,133
Sacramento-Yolo MVCD	1,700,000	3.2	5,702
Coachella Valley MVCD	350,000	2.0	5,513
Northwest MVCD	500,000	3.0	5,233

Administrative Assistant (II)

District	District Population	18-19 COLA %	18-19 Salary
Marin-Sonoma MSM	760,000	3.5	7,202
Contra-Costa MVCD	1,052,000	3.1	6,914
Orange County VCD	3,121,000	3.0	6,850
Greater LA County VCD	5,800,000	3.0	6,610
LA West Vector & VBDCD	4,800,000	3.8	6,469
San Gabriel Valley MVCD	1,360,000	3.25	6,133
Sacramento-Yolo MVCD	1,700,000	3.2	5,702
Coachella Valley MVCD	350,000	2.0	5,513
Northwest MVCD	500,000	3.0	5,233

Vector Control Supervisor (III) & Vector Ecologist III

District	District Population	18-19 COLA %	18-19 Salary
Greater LA County VCD	5,800,000	3.0	8,209
Contra-Costa MVCD	1,052,000	3.1	8,204
Marin-Sonoma MSM	760,000	3.5	8,010
San Gabriel Valley MVCD	1,360,000	3.25	7,920
Orange County VCD	3,121,000	3.0	7,846
LA West Vector & VBDCD	4,800,000	3.8	7,293
Northwest MVCD	500,000	3.0	7,151
Sacramento-Yolo MVCD	1,700,000	3.2	6,828
Coachella Valley MVCD	350,000	2.0	6,496

Senior Administrative Assistant (IV) & Financial Specialist (IV)

District	District Population	18-19 COLA %	18-19 Salary
Contra-Costa MVCD	1,052,000	3.1	8,687
Northwest MVCD	500,000	3.0	8,678
Orange County VCD	3,121,000	3.0	8,511
Marin-Sonoma MSM	760,000	3.5	8,503
Greater LA County VCD	5,800,000	3.0	8,459
San Gabriel Valley MVCD	1,360,000	3.25	8,223
Sacramento-Yolo MVCD	1,700,000	3.2	8,030
LA West Vector & VBDCD	4,800,000	3.8	7,743
Coachella Valley MVCD	350,000	2.0	7,596

Administrative Services Specialist (IV) & General Services Specialist (IV)

District	District Population	18-19 COLA %	18-19 Salary
Contra-Costa MVCD	1,052,000	3.1	8,687
Northwest MVCD	500,000	3.0	8,678
Orange County VCD	3,121,000	3.0	8,511
Marin-Sonoma MSM	760,000	3.5	8,503
Greater LA County VCD	5,800,000	3.0	8,459
San Gabriel Valley MVCD	1,360,000	3.25	8,223
Sacramento-Yolo MVCD	1,700,000	3.2	8,030
LA West Vector & VBDCD	4,800,000	3.8	7,743
Coachella Valley MVCD	350,000	2.0	7,596

Field Operations Forman (IV)

District	District Population	18-19 COLA %	18-19 Salary
Contra-Costa MVCD	1,052,000	3.1	8,687
Northwest MVCD	500,000	3.0	8,678
Orange County VCD	3,121,000	3.0	8,511
Marin-Sonoma MSM	760,000	3.5	8,503
Greater LA County VCD	5,800,000	3.0	8,459
San Gabriel Valley MVCD	1,360,000	3.25	8,223
Sacramento-Yolo MVCD	1,700,000	3.2	8,030
LA West Vector & VBDCD	4,800,000	3.8	7,743
Coachella Valley MVCD	350,000	2.0	7,596

Field & Specialty Operations Manager (V1)

District	District Population	18-19 COLA %	18-19 Salary
Coachella Valley MVCD	350,000	2.0	10,649
Contra-Costa MVCD	1,052,000	3.1	9,925
Orange County VCD	3,121,000	3.0	9,746
Greater LA County VCD	5,800,000	3.0	9,496
Marin-Sonoma MSM	760,000	3.5	9,320
San Gabriel Valley MVCD	1,360,000	3.25	8,993
Sacramento-Yolo MVCD	1,700,000	3.2	8,432
LA West Vector & VBDCD	4,800,000	3.8	8,269
Northwest MVCD	500,000	3.0	7,975

Senior Operations Manager (V)

District	District Population	18-19 COLA %	18-19 Salary
Coachella Valley MVCD	350,000	2.0	10,649
Contra-Costa MVCD	1,052,000	3.1	9,925
Orange County VCD	3,121,000	3.0	9,746
Greater LA County VCD	5,800,000	3.0	9,496
Marin-Sonoma MSM	760,000	3.5	9,320
San Gabriel Valley MVCD	1,360,000	3.25	8,993
LA West Vector & VBDCD	4,800,000	3.8	8,723
Sacramento-Yolo MVCD	1,700,000	3.2	8,432
Northwest MVCD	500,000	3.0	7,975

Public Education & Technical Support Specialist (V)

District	District Population	18-19 COLA %	18-19 Salary
Coachella Valley MVCD	350,000	2.0	10,649
Contra-Costa MVCD	1,052,000	3.1	9,925
Orange County VCD	3,121,000	3.0	9,746
Greater LA County VCD	5,800,000	3.0	9,496
Marin-Sonoma MSM	760,000	3.5	9,320
San Gabriel Valley MVCD	1,360,000	3.25	8,993
LA West Vector & VBDCD	4,800,000	3.8	8,723
Sacramento-Yolo MVCD	1,700,000	3.2	8,432
Northwest MVCD	500,000	3.0	7,975

Administrative Services Specialist (V)

District	District Population	18-19 COLA %	18-19 Salary
Coachella Valley MVCD	350,000	2.0	10,649
Contra-Costa MVCD	1,052,000	3.1	9,925
Orange County VCD	3,121,000	3.0	9,746
Greater LA County VCD	5,800,000	3.0	9,496
Marin-Sonoma MSM	760,000	3.5	9,320
San Gabriel Valley MVCD	1,360,000	3.25	8,993
LA West Vector & VBDCD	4,800,000	3.8	8,723
Sacramento-Yolo MVCD	1,700,000	3.2	8,432
Northwest MVCD	500,000	3.0	7,975

Vector-Borne Disease Control Specialist (V)

District	District Population	18-19 COLA %	18-19 Salary
Coachella Valley MVCD	350,000	2.0	10,649
Contra-Costa MVCD	1,052,000	3.1	9,925
Orange County VCD	3,121,000	3.0	9,746
Greater LA County VCD	5,800,000	3.0	9,496
Marin-Sonoma MSM	760,000	3.5	9,320
San Gabriel Valley MVCD	1,360,000	3.25	8,993
LA West Vector & VBDCD	4,800,000	3.8	8,723
Sacramento-Yolo MVCD	1,700,000	3.2	8,432
Northwest MVCD	500,000	3.0	7,975

Vector Ecology Manager (V)

District	District Population	18-19 COLA %	18-19 Salary
Coachella Valley MVCD	350,000	2.0	10,649
Contra-Costa MVCD	1,052,000	3.1	9,925
Orange County VCD	3,121,000	3.0	9,746
Greater LA County VCD	5,800,000	3.0	9,496
Marin-Sonoma MSM	760,000	3.5	9,320
San Gabriel Valley MVCD	1,360,000	3.25	8,993
LA West Vector & VBDCD	4,800,000	3.8	8,723
Sacramento-Yolo MVCD	1,700,000	3.2	8,432
Northwest MVCD	500,000	3.0	7,975

Assistant Director

District	District Population	18-19 COLA %	18-19 Salary
Sacramento-Yolo MVCD	1,700,000	3.2	—
LA West Vector & VBDCD	4,800,000	3.8	12,984
Marin-Sonoma MSM	760,000	3.5	11,250
Orange County VCD	3,121,000	3.0	10,897
Contra-Costa MVCD	1,052,000	3.1	10,870
Coachella Valley MVCD	350,000	2.0	10,690
Northwest MVCD	500,000	3.0	10,364
San Gabriel Valley MVCD	1,360,000	3.25	10,082
Greater LA County VCD	5,800,000	3.0	9,703

Executive Director

District	District Population	18-19 COLA %	18-19 Salary
Northwest MVCD	500,000	3.0	18,696
Contra-Costa MVCD	1,052,000	3.1	16,069
LA West Vector & VBDCD	4,800,000	3.8	15,923
Marin-Sonoma MSM	760,000	3.5	14,299
Greater LA County VCD	5,800,000	3.0	13,166
Sacramento-Yolo MVCD	1,700,000	3.2	12,500
San Gabriel Valley MVCD	1,360,000	3.25	11,334
Coachella Valley MVCD	350,000	2.0	11,221
Orange County VCD	3,121,000	3.0	10,897

NO.	POSITION		2018-2019 MONTHLY SALARY WITH (3.8% COLA)	STATE LIC.		LONGEVITY PAY				DEGR	TOT %	TOTAL MONTHLY COMPENSATION
				C	D	8TH YR.	12TH YR	16TH YR	20TH	MS PHD		
				1.5	1.5	2.5	2.5	2.5	2.5	5.5		
1	ADMIN ASST	IV	\$7,743.00			.025	.025				.05	\$8,130.15
4	VEC TECH	II	\$6,469.00								.	\$25,876.00
1	ADMIN ASST	II	\$6,469.00								.	\$6,469.00
1	ADMIN ASST	II	\$6,469.00								.	\$6,469.00
1	VEC TECH	II	\$6,469.00								.	\$6,469.00
1	VE MANAGER	V	\$8,723.00	.015	.015	.025	.025	.025			.105	\$9,638.92
1	VEC TECH	II	\$6,469.00	.015	.015	.025					.055	\$6,824.80
1	VEC TECH	II	\$6,469.00	.015	.015	.025	.025	.025			.105	\$7,148.25
1	VEC TECH	II	\$6,469.00								.	\$6,469.00
1	VEC TECH	II	\$6,469.00			.025	.025	.025			.075	\$6,954.18
1	VEC TECH	II	\$6,469.00								.	\$6,469.00
1	VEC TECH	II	\$6,469.00	.015	.015	.025	.025	.025	.025		.130	\$7,309.97
1	FINANCIAL SP	IV	\$7,743.00								.	\$7,743.00
1	VEC TECH	II	\$6,469.00								.	\$6,469.00
1	VEC TECH	II	\$6,469.00	.015	.015	.025	.025				.08	\$6,986.52
1	VEC TECH	II	\$6,469.00	.015	.015	.025	.025				.080	\$6,986.52
1	VEC TECH	II	\$6,469.00								.	\$6,469.00
1	VEC TECH	II	\$6,469.00								.	\$6,469.00
1	VEC TECH	II	\$6,469.00	.015	.015	.025	.025	.025			.105	\$7,148.25
1	VEC- BORNE	V	\$8,723.00	.015	.015						.030	\$8,984.69
1	VEC TECH	II	\$6,469.00			.025					.025	\$6,630.73
1	MANAGER	V-1	\$8,269.00			.025	.025	.025			.075	\$8,889.18
1	FORMAN	IV	\$7,743.00	.015		.025	.025				.065	\$8,246.30
1	VEC TECH	II	\$6,469.00								.	\$6,469.00
1	VEC TECH	II	\$6,469.00								.	\$6,469.00
1	FORMAN	IV	\$7,743.00	.015	.015	.025	.025	.025	.025		.130	\$8,749.59
1	ADMIN ASST	II	\$6,469.00	.015	.015	.025	.025	.025	.025		.130	\$7,309.97
1	SUPERVISOR	III	\$7,293.00	.015	.015	.025	.025				.080	\$7,876.44
1	ASST DIR	II	\$12,984.00			.025	.025	.025			.075	\$13,957.80
1	VEC TECH	II	\$6,469.00								.	\$6,469.00
1	EX DIR		\$15,923.00	.015	.015	.025	.025	.025	.025	.055	.185	\$18,868.76
1	MANAGER	V-1	\$8,269.00	.015	.015	.025	.025				.080	\$8,930.52
1	VEC TECH	II	\$6,469.00	.015	.015						.03	\$6,663.07
1	ASST DIR	i	\$12,984.00	.015	.015						.03	\$13,373.52
1	TECH SPEC	V	\$8,723.00	.015	.015	.025	.025	.025			.105	\$9,638.92
1	VEC TECH	II	\$6,469.00	.015		.025	.025				.065	\$6,889.49
1	VEC TECH	II	\$6,469.00								.	\$6,469.00
1	VEC TECH	II	\$6,469.00	.015	.015	.025					.055	\$6,824.80
1	VEC TECH	II	\$6,469.00								.	\$5,031.00
	36		\$291,057.00	.285	.255	.525	.45	.275	.1	.055	1.945	\$325,239.28

2. Minutes of the May 10, 2018 Board of Trustees Meeting	
Staff Report:	None Scheduled
Recommended Action:	Approve

**Minutes of the
Board of Trustees' Meeting
May 10, 2018
Los Angeles County West Vector & Vector-Borne Disease Control District**

Trustees Present:

Bill DiSalvo
James Osborne
Jay Garacochea
Nancy Greenstein
Jim Gazeley
Chad Blouin
Elizabeth Sala
Barbara Barsocchini
John Frazee
Suzanne Fuentes
Olivia Valentine
Joan Yacovone

Trustees Absent:

Bill Ailor
Velveth Schmitz
Kurt Weideman

Staff/Advisors Present:

Robert Saviskas, Executive Director
Teri Roa, Assistant Director
Michael Jenkins, General Legal Counsel

1. Approve minutes of the March 8, 2018 Board of Trustees Meeting

Motion by: Greenstein
Second: Gazeley
Vote: Ayes: 9
 Noes: 0
 Abstentions: 3 (Fuentes, Valentine, Yacovone)

Action: Motion Passed

2. Executive Director's Report for April 2018

- A) WNV & Zika Virus Update
- B) Public Education Program
- C) Field Operations Program
- D) Vector Ecology Program

Action: Received & Filed

3. Financial Report for Marh-April 2018

- A) Investment Report**
- B) Bills and Salaries**

Motion by: DiSalvo
Second: Yacovone

Vote: Ayes: 12
 Noes: 0
 Abstentions: 0

Action: Motion Passed

4. Construction Update for 6720-6740 Centinela Ave.

Received & Filed

5. Property Tax Settlement between LAUSD, LACCD, & LA West Vector

Motion by: DiSalvo
Second: Frazee
Vote: Ayes: 12
 Noes: 0
 Abstentions: 0

Action: Motion Passed

6. Motion to adjourn

Motion by: DiSalvo
Second: Gazeley
Vote: Ayes: 12
 Noes: 0
 Abstentions: 0

Action: Motion Passed

Approved by the Board of Trustees

Olivia Valentine, Secretary

Date

3. Executive Director's Report for June 2018	
Staff Report:	Robert Saviskas, Executive Director
Recommended Action:	Advisory and/or Action (as needed)
3A) WNV Update	Advisory
3B) Public Education Program	Advisory
3C) Field Operations Program	Advisory
3D) Vector Ecology Program	Advisory

West Nile Virus Update

West Nile Virus Disease Cases* and Presumptive Viremic Blood Donors by State – United States, 2018 (as of June 26, 2018)

West Nile Virus Disease Cases and Presumptive Viremic Blood Donors by State – United States,

State	Neuroinvasive Disease Cases†	Non–neuroinvasive Disease Cases	Total cases	Deaths	Presumptive viremic blood donors‡
Alabama	0	0	0	0	1
California	5	4	9	0	0
North Dakota	0	1	1	0	0
South Dakota	0	0	0	0	1
Totals	5	5	10	0	2

WNV California

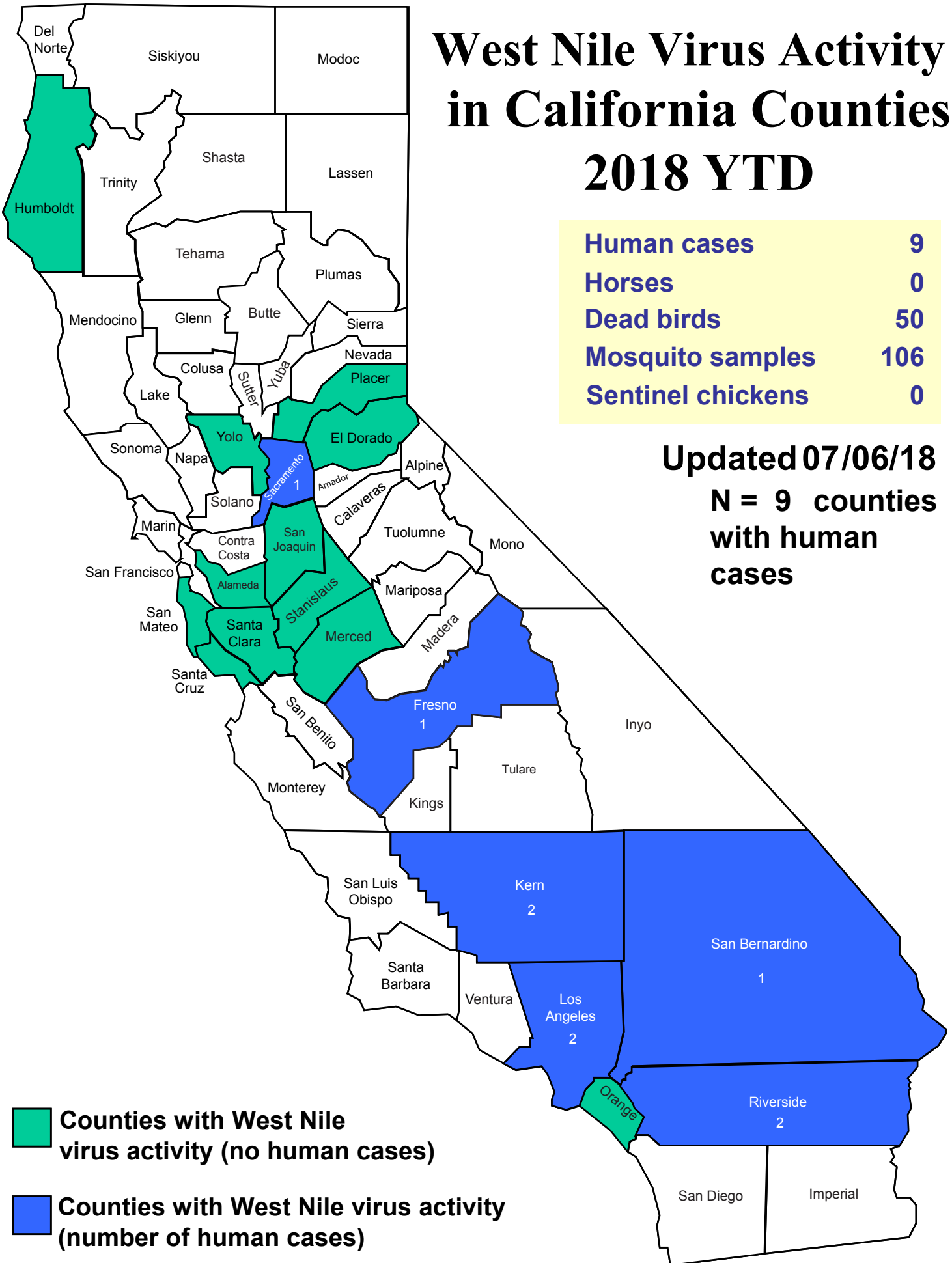
2017 California 2017 YTD West Nile Virus Activity as of 7-6-17	
Counties	18
Human Infection Cases	3
Dead birds	51
Mosquito samples	490
Sentinel chickens	2


 1 year

2018 California 2018 YTD West Nile Virus Activity as of 7-6-18	
Counties	19
Human Infection Cases	9
Dead birds	50
Mosquito samples	106
Sentinel chickens	0

2003-2016 WNV ACTIVITY SUMMARY															
Element	2004	2005	2006	2007	2008	2009	2010	2011	2012	2013	2014	2015	2016	2017	Total
Human cases (fatal)	779 (29)	880 (19)	278 (7)	380 (21)	445 (15)	112 (4)	111 (6)	158 (9)	479 (20)	379 (15)	801 (31)	782 (53)	442 (19)	536 (41)	6,565 (289)
Horses	540	456	58	28	32	18	19	15	22	13	0 ³	0 ³	0 ³	21	1,223
Dead birds	3,232	3,046	1,446	1,396	2,569	515	416	688	1,644	1,251	2,442	1,349	1,352	510	21,952
Mosquito samples	1,136	1,242	832	1,007	2,003	1,063	1,305	2,087	2849	2,528	3,340	3,329	3,528	3,371	29,652
Sentinel chickens	809	1,053	640	510	585	443	281	391	540	485	443	449	343	305	7,347
Squirrels	49	48	32	26	32	10	24	24	23	0 ³	0 ³	0 ³	0 ³	0	276

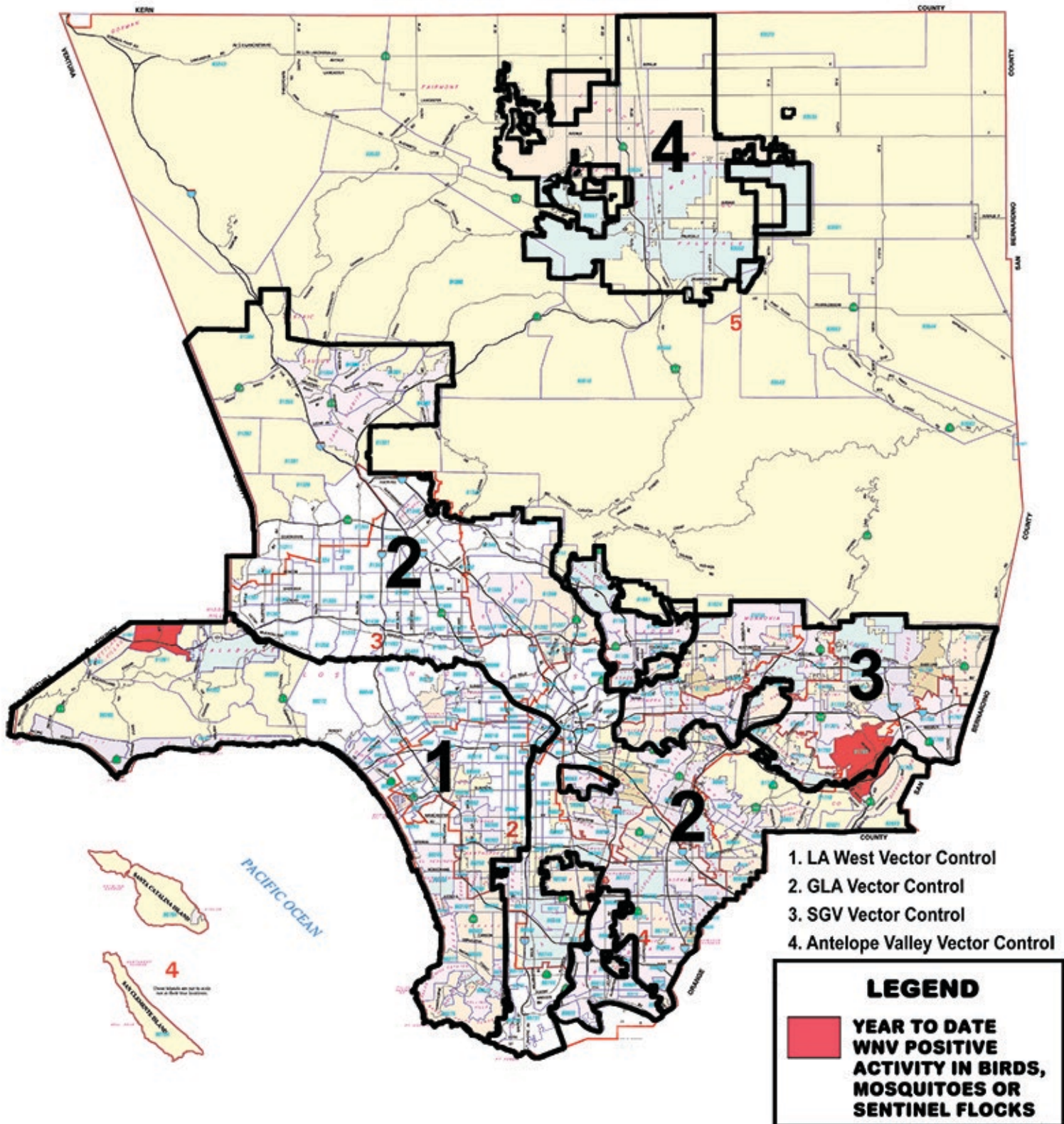
West Nile Virus Activity in California Counties 2018 YTD



Counties with West Nile virus activity (no human cases)

Counties with West Nile virus activity (number of human cases)

2018 LOS ANGELES COUNTY WEST NILE VIRUS POSITIVE ACTIVITY BY ZIP CODE

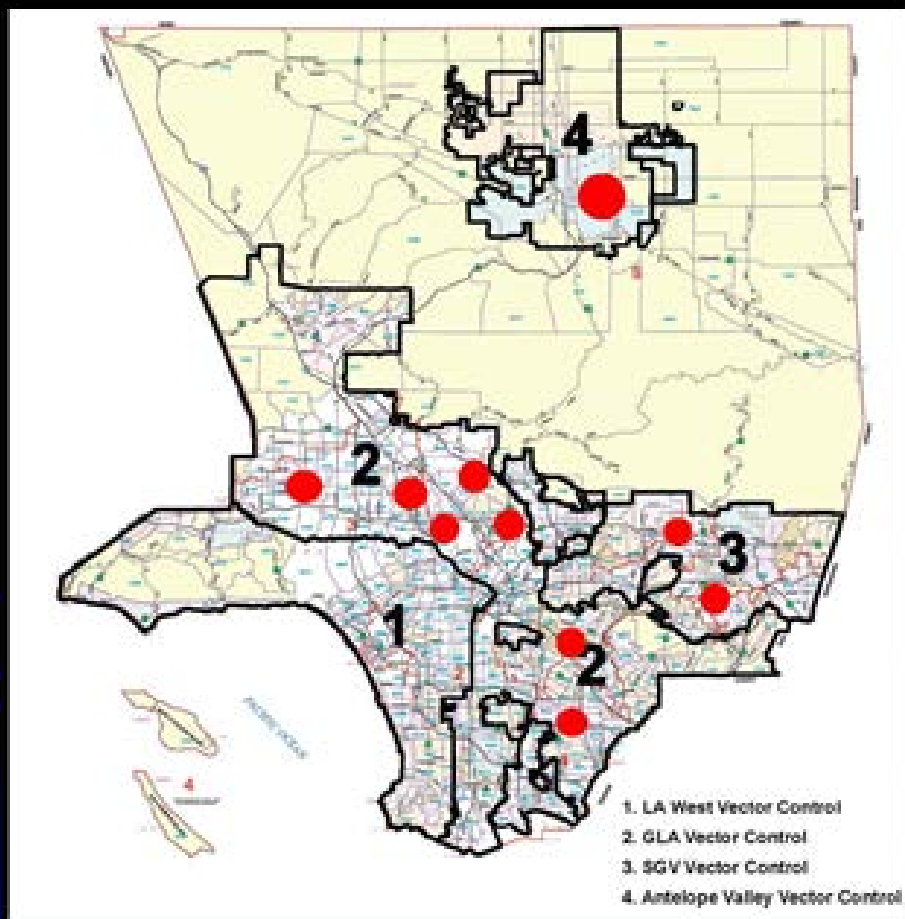


Highest WNV Risk Locations in LA County for 2018

The Los Angeles County Health Department has designated the following cities/areas to be the highest WNV risk areas for 2018

- 1) Lancaster
- 2) Lakewood
- 3) Whittier
- 4) Northridge
- 5) Covina
- 6) Burbank
- 7) North Hollywood
- 8) San Gabriel
- 9) Sun Valley
- 10) Valley Village

Highest WNV Risk Locations in LA County 2018



Los Angeles County West Vector & Vector-Borne Disease Control District June 2018

Confirmed WNV Cases within the District

Equine

Date	City	Zip	Infected/Death

Mosquitoes

Mosquito Pool Test Results				
Date Confirmed	Site #	Location	Pool # / Species	Results

Sentinel Chickens

Sentinel Chicken Test Results					
Bleed Week	Confirmation Date	Coop #	Location	Band #	Results

Dead Birds

Dead Bird Positive Test Results				
Species	Location	Zip Code	Date Collected	Results Reported
American Crow	5303 Cedarhaven Drive, Agoura Hills	91301	6-13-18	6-26-18

Sentinel Flocks

Location (Common Name & Address)	Site Number	Positive Chickens 2018		
		WNV	SLE	WEE
1. Botanical Gardens 26300 Crenshaw Blvd. Rolling Hills Estates, CA 90274	1001	0	0	0
2. Madrona Marsh 3201 Plaza Del Amo Torrance, CA 90503	1002	0	0	0
3. Wilderness Park 1102 Camino Real Redondo Beach, CA 90277	1003	0	0	0
4. Lawndale 4722 Manhattan Beach Blvd. Lawndale, CA 90260	1004	0	0	0
5. Chevron Refinery 324 El Segundo Blvd. El Segundo, CA 90245	1005	0	0	0
6. Playa Del Rey 8000 W. Jefferson Blvd. Playa Del Rey (L.A. City), CA 90293	1006	0	0	0
7. Baldwin Hills 5000 Blk. S. La Cienega Blvd. L.A. County (Baldwin Hills), CA 90008	1007	0	0	0
8. Inglewood Cemetery 720 E. Florence Ave. Inglewood, CA 90301	1049	0	0	0
9. Rosedale Cemetery 1831 W. Washington Blvd. Los Angeles, CA 90006	1009	0	0	0
10. La Brea Tar Pits 5801 Wilshire Blvd. Los Angeles, CA 90036	1010	0	0	0
11. Downtown Los Angeles 313 N. Figueroa St. Los Angeles, CA 90012	1073	0	0	0
12. Will Rogers State Park 1501 Will Rogers S.P. Road Pacific Palisades (L.A. City), CA 90272	1022	0	0	0
13. Penmar Golf Course 1233 Rose Ave. Venice (L.A. City), CA 90291	1012	0	0	0
14. Malibu Lagoon 23200 Pacific Coast Highway Malibu, CA 90265	1013	0	0	0
15. Topanga State Park 20829 Entrada Road Topanga (L.A. County), CA 90290	1023	0	0	0
16. Calabasas Country Club 4300 Park Entrada Calabasas, CA 91302	1024	0	0	0
17. Westlake Village 4812 Lakeview Canyon Rd. Westlake Village, CA 91361	1025	0	0	0
18. Franklin Canyon Park 2600 Franklin Canyon Dr. Los Angeles, CA 90210	1026	0	0	0

July 2018 Monthly Report

Public Education

PUBLIC EDUCATION PROGRAM

BACKGROUND

An essential program of the District includes educating the public about the life cycle of honeybees, mosquitoes, ticks, vector-borne diseases, property owners' responsibilities, and functions of the District. General public education is accomplished through the means of informational brochures, fact sheets, city bulletins, public speaking engagements, public service announcements, informational booths at community events, and the District web site (www.lawestvector.org).

Media and service group packets and videos describing the services of the District, backyard mosquito breeding, Africanized honeybee preparedness, Lyme disease awareness and other vector-borne diseases have been widely distributed in addition to thousands of informational pamphlets. Public service announcement tapes are routinely distributed to local cable stations and written public service announcements are distributed to local radio stations.

District staff has implemented an education program in the public and private elementary schools through a cooperative effort with the teachers. The programs offered cover aspects of honey bee, tick and mosquito biology with an emphasis toward public health and safety. The District provides each class with student and teacher workbooks, brochures, bookmarks, videos, and visual aids. District staff trains the teachers and encourages them to include the program as part of their yearly science curriculum.

The District staff has indoctrinated the residents of the District to coexist with the Africanized honeybees by utilizing the various elements of the Public Education Program. The District has been the lead agency in training and coordinating fire departments, police departments, and 911 systems throughout the District in preparation for Africanized honeybee emergencies.

SCHEDULING OF EVENTS

Please contact the District to schedule an event or if you are aware of an organization that may benefit from receiving the latest information regarding the West Nile virus, Africanized honeybees, Lyme disease, or other vector-borne diseases.

Heather Teodoro: (310) 915-7370, ext. 225

Teri Roa: (310) 915-7370, ext 233

Robert Saviskas: (310) 915-7370, ext. 223

CURRENT STATUS



DATE: May 24, 2018

EVENT: Vector Control Presentation

LOCATION: United States Postal Service, Los Angeles

ATTENDANCE: 40

A presentation for the USPS Westchester office.



DATE: June 2, 2018

EVENT: Torrance Environmental Fair & City Yard Open House

LOCATION: Torrance City Services Facility, Torrance

ATTENDANCE: 3,000

An environmental fair hosted by the City of Torrance and Torrance Environmental Quality Commission.

(Pictured: City of Torrance Trustee, Kurt Weideman)



CURRENT STATUS (Continued)



DATE: June 9, 2018

EVENT: City of Lawndale Health, Safety & Pet Fair

LOCATION: Jane Addams Park, Lawndale

ATTENDANCE: 1,000

An annual health and safety event organized by the City of Lawndale.

(Pictured: City of Lawndale City Clerk, Rhonda Hofmann Gorman)



Field Operations

June 2018

Hyperion:

Hyperion maintains to have multiple offline batteries and clarifier; all are continuously monitored and are either drained or treated with pesticides until repair are fully restored.

District staffs attend meetings with Hyperion management team on every other Tuesday to exchange information and review inspection reports. Most mosquito trap counts were lowered during this period.

Chevron Refinery:

Area Treated: 355.32 square yards

Type of Source(s): 6 excess water sites, 8 drain channels, 4 containers, and 12 box drains.

Treatment Products: 9.6 ounces of FourStar (180 Day Briquettes), 13.36 ounces of Altosid XR-5 briquettes, 1.42 ounces of Altosid Pellets, and 2.74 ounces of VectoBac Granules.

Baldwin Hills

Oil Fields:

Area Treated: 5414.94 square yards

Type of Source(s): 322 oil sumps, 21 box drains, 38 containers, 7 ponds, 2 drain channel, and 7 excess water sites.

Treatment Products: 1.2 ounces of FourStar (180 Day Briquettes), 5.22 ounces of Agnique Liquid, 635.55 ounces of Altosid XR-5 (180 Day Briquettes), 39.07 ounces of VectoBac Granules, 30.48 ounces of VectoLex granules 1.46 ounces of VectoMax Granules, and .08 ounces of Altosid Pellets.

Ballona Wetlands:

Area Treated: No Treatments Required

Type of Source(s): Wetlands

Treatment Products: 0

Underground Drains:

Area Treated: 62971.44 square yards

Type of Source(s): underground drains

Treatment Products: 7,192.8 ounces of FourStar (180 Day Briquettes), 2.64 ounces of Agnique Liquid, 33.05 ounces of VectoBac Granules, 201.93 ounces of VectoBac Liquid, 18 ounces of VectoMax Granules, and 3.22 ounces of VectoMax Water Soluble Packets.

Madrona Marsh:

Area Treated: 52,272.02 Square Yards

Type of Source(s): Marsh

Treatment Products: 2,560 ounces of VectoBac granules, and 896.01 ounces of VectoLex granules.

Playa Vista Marsh System:

Area Treated: 977122.00 square yards

Type of Source(s): Marsh

Treatment Products: 24,520 ounces of VectoBac granules, 280 ounces of VectoBac Liquid, 24,800 ounces of VectoLex granules, and 13,280 ounces of VectoMax Granules.

MOSQUITO SERVICE REQUEST CALLS BY CITY
JANUARY- JUNE 2018

NO.	CITY							
		Jan.	Feb.	Mar.	Apr.	May	Jun.	TOTAL
1	Aqoura Hills					5	1	6
2	Beverly Hills				2	1		3
3	Calabasas		1		2	1	1	5
4	Culver City	1			1	4	4	10
5	El Segundo	6	2	4	11	1		24
6	Hawthorne						1	1
7	Hermosa Beach		1			2		3
8	Hidden Hills							
9	Inglewood							
10	Lawndale							
11	Lomita							
12	Los Angeles City	6	21	2	42	32	39	142
13	L.A. Co. Unincorporated Areas – (Malibu, Topanga, etc.)				2	1	2	5
14	Malibu City							
15	Manhattan Beach			1	1	1	4	7
16	Palos Verdes Estate						1	1
17	Rancho Palos Verdes		2				1	3
18	Redondo Beach		1	1	2	3	2	9
19	Rolling Hills							
20	Rolling Hills Estates				1			1
21	Santa Monica				2	4	6	12
22	Torrance		2		2	1	13	18
23	West Hollywood	2				1	1	4
24	Westlake Village		1			5		6
	Total (All Cities)	15	31	8	68	62	76	260

AHB SERVICE CALLS BY CITY
JANUARY - JUNE 2018

NO.	CITY							
		Jan.	Feb.	Mar.	Apr.	May	Jun.	TOTAL
1	Agoura Hills	1				1		2
2	Beverly Hills		3	4	12	14	14	47
3	Calabasas		1		1	1		3
4	Culver City		1	4	3	9	13	30
5	El Segundo	1	1	1	3	1	2	9
6	Hawthorne		3		10	5	7	25
7	Hermosa Beach				1			1
8	Hidden Hills							
9	Inglewood	1	4	4	18	18	12	57
10	Lawndale			2	6	5	6	19
11	Lomita		2	1	7	6	5	21
12	Los Angeles City	15	23	31	103	66	85	323
13	L.A. Co. Unincorporated Areas – (Malibu, Topanga, etc.)			1		3	6	10
14	Malibu City							
15	Manhattan Beach	1	2				3	6
16	Palos Verdes Estate	2	1	3	7	9	6	28
17	Rancho Palos Verdes	3	1	1	1	1	3	10
18	Redondo Beach	1	1	3	5	6	6	22
19	Rolling Hills		3		3	3	1	10
20	Rolling Hills Estates	1	2			2	1	6
21	Santa Monica	2	3	6	15	12	24	62
22	Torrance	6	6	9	20	22	22	85
23	West Hollywood				1		1	2
24	Westlake Village						1	1
	Total (All Cities)	34	57	70	216	184	218	779
	Calls for Other Districts	14	25	24	109	70	103	345
	Structural (Ref. to Yellow Pgs)	1	3	2	7	1	5	19
	Misc. (calls not returned, swarms left, etc.)	2	23	19	86	46	69	245
	GRAND TOTAL	51	108	115	418	301	395	1388

January 2018 through December 2018

Stinging Insects

(Africanized honeybees, yellow jackets, bumble bees, wasps, carpenter bees, etc.)

Service Requests and Treatments

MONTH	2013	2014	2015	2016	2017	2018
Jan.	52/25/15	59/27/12	51/37/10	28/19/9	26/14/6	34/19/8
Feb.	85/51/24	75/42/17	103/63/18	93/56/14	69/35/12	74/38/11
Mar.	260/140/79	187/118/47	240/119/66	280/131/41	195/119/40	115/70/26
Apr.	657/354/204	354/196/113	301/206/91	368/224/81	515/303/90	418/216/71
May	607/388/229	339/220/74	266/167/72	426/234/100	383/217/79	301/184/77
June	502/334/213	245/182/105	186/113/65	353/195/94	481/266/121	395/218/92
July	511/352/249	416/290/156	210/151/77	262/181/103	526/374/193	
Aug.	362/276/203	248/183/108	215/143/75	279/209/98	358/243/142	
Sept.	272/188/133	247/182/104	173/119/58	237/139/63	418/283/157	
Oct.	151/114/71	168/111/55	209/145/53	240/164/73	320/228/119	
Nov.	87/48/31	130/82/32	116/84/41	98/66/38	208/145/92	
Dec.	32/20/11	36/19/7	40/25/14	46/32/16	84/45/18	
TOTAL	3578/2290/1462	2504/1652/830	2110/1372/640	2710/1650/730	3583/2272/1069	

Figures listed above represent the following: total number of calls the District received, service request responses, and total number of treatments.

Red Imported Fire Ant Report

2018 Collections by Month and Species

Month of Collection	Red Imported Fire Ants (RIFA)	Argentine Ants	OD House Ants	Harvest Ants	Little Black Ants	Big Headed Ants	South Western Ants	Thief Ants	Small Honey Ants	Other Types of Ants	Total	Sites Surveyed / Baited
January	0	58	0	0	2	0	0	0	0	0	60	520
February	0	84	0	0	28	1	0	2	0	0	115	789
March	0	32	0	0	7	0	0	2	0	0	41	480
April	0	10	0	1	43	0	0	0	0	0	54	360
May	0	21	0	0	22	0	1	0	0	0	44	290
June	0	40	0	1	18	0	0	1	0	0	60	320
July												
August												
September												
October												
November												
December												
Total												

Current Status Summary

Vector Ecology Monthly Report June 2018

Sentinel Chickens: See “WNV Update” section.

Adult Mosquito Collections: See “WNV Update” section.

Midge Collections:

Ballona Creek: During this reporting period, adult midge populations at the Ballona Creek averaged 0.004108-grams/trap night.

Samples averaged 0.001695-grams/trap night over the last reporting period.

Palos Verdes Peninsula: Information on Sweet Itch is available on the District's website.

4. Financial Report for May-June 2018	
A) Bills and Salaries	
Staff Report:	None Scheduled
Recommended Action:	Approve

<u>PAYEE NAME</u>	<u>DESCRIPTION</u>	<u>STATEMENT</u>	<u>AMOUNT</u>
PAYROLL	SALARIES/PAYROLL TAXES	PERIOD: APR. 1 TO MAY 31, 2018	507,452.42
ADAPCO, INC 2070	INSECTICIDES 5232	INV. NO.: 115361,115703,115983	132,527.19
ADT SECURITY SYSTEMS 1069	SECURITY 5281	STMT. DATE: 04-2018,05-2018	991.06
AIRGAS WEST 1109	ENTO/LAB SUPPLIES, EQUIP & SER 5115	INV. NO.: 9953331890,9954043694	145.02
ALERT COMMUNICATIONS 1164	AHB PROGAM FUND 5117	INV. NO.: 30169,30250	3,336.28
AMERICAN MESSAGING 1215	COMMUNICATIONS 5275	INV. NO.: L8331976SE,L8331976SF	2,332.19
ARC PROFESSIONAL SERVICES 1239	LAND & LAND DEVT. 5410	STMT. DATE: 04-24-18,05-28-18	59,509.63
AT&T MOBILITY 3200	COMMUNICATIONS 5275	STMT. DATE: 04-2018,5-2018	4,342.87
B & H PHOTO VIDEO 1301	OFFICE EQUIPMENT 5430: \$4,319.75;OFFICE EXPENSE 5170: \$379.26	INV. NO.: 142764439,142870306	4,699.01
BEST BEST & KRIEGER	LEGAL SERVICES FUND 5184	INV. NO.: 822913	525.00
BIOQUIP PRODUCTS, INC. 1420	ENTO/LAB SUPPLIES, EQUIP & SER 5115	STMT. DATE: 03-2018	170.86
BLUE ANT/CLEANING CONTRACT 1447	JANITORIAL 5131; \$2,592.00 ; BLDG. MAINT. 5135: \$648.00	STMT. DATE: 04-2018,5-2018	3,240.00
CALIFORNIA ICE CO. 1570	ENTO/LAB SUPPLIES, EQUIP & SER 5115	STMT. DATE: 04-01-18,05-01-18	4,664.48
CALPERS HEALTH BENEFITS DIV. 1610	GROUP INSURANCE 5035	STMT. DATE: 05-2018,06-2018	91,268.31
CALPERS RETIREMENT SYSTEM 1610	RETIREMENT 2084: \$7,614.87; 5030: \$89,471.58	STMT. DATE: 03-15-18,03-31-18,04-15-18,04-30-18	97,086.45
CITY OF CULVER CITY 1835	EDUCATIONAL MATERIALS & EQUIP 5171	P.O. # PE050318HT099	250.00
COMPLETE OFFICE 1758	OFFICE EXPENSE 5170	INV. NO.: 2129847,052018	1,118.80
EMERSON'S LOCKSMITH 2000	BLDG. MAINT 5135	INV. DATE: 04-25-18	1,109.08
FEDERAL EXPRESS CORP. 2050	OFFICE EXPENSE 5170	INV. NO.: 617929269	1,054.36
FISHER SCIENTIFIC COMPANY LLC 2100	ENTO/LAB SUPPLIES, EQUIP & SER 5115	INV. NO.: 0397786	150.14
FOUNDATION LABORATORY 2111	EMPLOYEE PHYSICAL 5042	INV. DATE: 03-2018	260.00
GOLDEN STATE ELEVATOR 2220	BLDG. MAINT. 5135	STMT. DATE: 04-2018,05-2018	900.90
GOLDEN STATE WATER CO. 3580	WATER 5264	STMT. DATE: 04-2018	370.17
GRAINGER 2228	OFF EXP. 5170:\$372.23; FIELD 5127:\$2,994.13	INV. NO.: 9769422370 ,9804197516,9805109668	3,366.36
HENRY P. ENG, C.P.A. 2900	BOOKKEEPING 5186	STMT. DATE: 05-2018,06-2018	4,000.00
HOME DEPOT 2320	BLDG. 5135: \$434.09 ; LAB 5115: \$579.03	STMT. DATE: 04-28-18,05-28-18	1,013.12
IMAGINE IT CLEAN, INC. 2374	JANITORIAL 5131	INV. DATE: 04-2018	415.00
K & S EQUIPMENT SERVICES	FIELD EQUIPMENT & REPAIR 5127	INV. NO.: 2649	235.00
M & N AUTOMOTIVE REPAIR INC. 2661	OUTSIDE AUTO REPAIR 5121	INV. NO.: 8509,8626	1,814.99
MALIBU FEED BIN 2676	ENTO/LAB SUPPLIES, EQUIP & SER 5115	INV. DATE: 04-30-18,05-31-18	956.72
MALIBU OFFICE 2579	OFFICE EXPENSE 5170	STMT. DATE: 04-2018,05-2018	1,508.00
MCMASTER-CARR SUPPLY 2770	ENTO/LAB SUPPLIES, EQUIP & SER 5115	INV. NO.: 61323637,64429228	665.56
MOSQUITO VECTOR CONTROL ASSOC. OF CA 3070	ENTO/LAB SUPPLIES, EQUIP & SER 5115	INV. NO.: 7360072,7360090	800.00
MR. CHAD GARNET BLOUIN 2862	BOARD EXPENSES 5161	MEETING OF 05/10/2018	100.00
MR. JAMES OSBORNE 2905	BOARD EXPENSES 5161	MEETING OF 05/10/2018	100.00
MR. JAY GARACOCHEA 2907	BOARD EXPENSES 5161	MEETING OF 05/10/2018	100.00
MR. JIM GAZELEY 2908	BOARD EXPENSES 5161	MEETING OF 05/10/2018	100.00
MR. JOHN FRAZEE 2926	BOARD EXPENSES 5161	MEETING OF 05/10/2018	100.00
MR. S.W. DISALVO 2960	BOARD EXPENSES 5161	MEETING OF 05/10/2018	100.00
MS. BARBARA BARSOCCHINI 3015	BOARD EXPENSES 5161	MEETING OF 05/10/2018	100.00
MS. ELIZABETH SALA 3019	BOARD EXPENSES 5161	MEETING OF 05/10/2018	100.00
MS. JOAN YACOVONE 3030	BOARD EXPENSES 5161	MEETING OF 05/10/2018	100.00
MS. NANCY GREENSTEIN 3043	BOARD EXPENSES 5161	MEETING OF 05/10/2018	100.00
MS. OLIVIA VALENTINE 3047	BOARD EXPENSES 5161	MEETING OF 05/10/2018	100.00
MS. SUZANNE FUENTES	BOARD EXPENSES 5161	MEETING OF 05/10/2018	100.00

<u>PAYEE NAME</u>	<u>DESCRIPTION</u>	<u>STATEMENT</u>	<u>AMOUNT</u>
NATIONWIDE RETIREMENT SOLUTIONS 3080	DEFERRED COMP. 2084	STMT. DATE: 04-30-18,05-15-18,05-31-18	30,101.65
NETWORK MAGIC UNLIMITED 3137	OUTSIDE CONSULTANTS 5180	INV. NO.: 23886,23902,23903,23904	14,009.80
PHONE GUYS VOICE & DATA SYSTEMS, INC. 3302	OUTSIDE CONSULTANTS 5180	INV. NO.: 40238	200.00
PITNEY BOWES GLOBAL FINANCIAL SERVICES LLC 3310	OFFICE EXPENSE 5170	INV. NO.: 22126346,3102201935	631.06
PLACER COUNTY PUBLIC HEALTH LABORATORY 3316	OUTSIDE LABORATORY SERVICES 5116	INV. NO.: 12312010	8,528.00
PRINCIPAL 3328	DISABILITY INSURANCE 5102	POLICY NO: 4911141	18,330.00
PRUDENTIAL OVERALL SUPPLY 3361	UNIFORMS 5070	STMT. DATE: 04-28-18	7,837.25
R & D PLUMBING & ROOTER 3369	BLDG. MAINT. 5135	INV. NO.: 85328	106.29
RECALL/IRON MOUNTAIN 2392	REFUSE COLLECTION 5270	INV. NO.: 15864088	253.01
RENKOW SERVICE CO., INC. 3415	BLDG. MAINT. 5135	INV. NO.: 75521	714.94
RUIZ BROS CONSTRUCTION/FAST-TRACK CONST. 3443	STRUCTURES AND IMPROVEMENTS 5416	APPLIC. DATE: 04/17/18,05/01/18	289,758.12
SACRAMENTO KOI, INC. 3448	TANKS 5420: \$79,983.92 ; OUTSIDE CONSTS/SERVICES 5180: \$10,540.00	INV. NO.: 20074	90,523.92
SAMY'S CAMERA INC. 3459	EDUCATIONAL MATERIALS & EQUIP 5171	INV. NO.: 30802	971.83
SHELL FLEET PLUS 3530	GASOLINE 5251	INV. NO.: 2355805,2355806	3,578.42
SHRED-IT USA	REFUSE COLLECTION 5270	INV. NO.: 8124730576	251.88
SOUTHERN CALIFORNIA EDISON 3620	ELECTRICITY 5264	STMT. DATE: 04-2018,05-2018	4,524.39
STAFF REIMBURSEMENTS	OFFICE EXPENSE 5170	STMT. DATE: 06-09-18	250.00
STERLING MESSENGER SVCS. 3682	OFFICE EXPENSE 5170	STMT. DATE: 04-01-18,05-01-18	2,918.50
SUN LIFE FINANCIAL 2175 / VSP 3998	DENTAL/VISION 5036	STMT. DATE: 04-2018,05-2018	12,445.67
SUN LIFE AND HEALTH INSURANCE CO. 2175	VOLUNTARY LIFE INS 2084	STMT. DATE: 04-2018,05-2018	692.01
TAHIM AND ASSOCIATES, CPA's 3713	AUDITING 5183	STMT FOR MONTH OF: MARCH 2018	600.00
TELETRAC, INC. 3730	COMMUNICATIONS 5275	INV. DATE.: 05-2018	2,814.66
THE GAS COMPANY 3800	GAS 5261	STMT. DATE: 04-2018	133.96
THE TOWING COMPANY 3833	TOWING 5254	INV. NO.: 51976	120.00
THERMAL COMBUSTION INNOVATORS 3835	ENTO/LAB SUPPLIES, EQUIP & SER 5115	INV. NO.: 189752,191504,192797	293.56
TIME WARNER CABLE	PUBLIC EDUCATION 5171	INV. NO.: 7204631052418	3,245.02
TWINING CONSULTING 3879	LAND AND LAND DEVELOPMENT 5410	STMT. DATE: 05-21-18	14,157.60
ULINE 3907	EDUCATIONAL EQUIP & MATERIALS 5171	INV. NO.: 14545880,98148456	1,663.25
UNIFY FINANCIAL CREDIT UNION	PAYROLL DEDUCTIONS PAYABLE 2084	STMT. DATE: 05-01-18	1,000.00
UNITED PACIFIC WASTE/ATHENS 3921	REFUSE COLLECTION 5270	INV. NO.: 5002149,5133919	1,354.80
UNITED STATES PLASTIC CORP 3920	ENTO/LAB SUPPLIES ,EQUIP & SER 5115	INV. NO.: 5391242	503.43
UNUM LIFE INS. CO OF AMERICA 3950	LONG TERM DIS INS 2084	STMT. DATE: 04-2018,5-2018	3,778.85
UPS 3957	OFFICE EXPENSE 5170	INV. NO.: AY7335158	33.79
VECTOR-BORNE DISEASE ACCT. 2842	CONFERENCES, MEETINGS, TRAIN - STAFF 5163	P.O. NO: PE052918HT104	3,216.00
VERIZON BUSINESS/FRONTIER 3991	TELEPHONE 5267	STMT. DATE: 04-25-18,05-25-18	5,372.74
VERIZON BUSINESS SERVICES 3991	EDUCATIONAL MATERIALS & EQUIP 5171	STMT. DATE: 04-2018	885.76
VORTEX 3997	BLDG. MAINT. 5135	INV. NO.: 1235715	605.00
WEX BANK (EXXON MOBIL) 2830	GASOLINE 5251	INV. NO.: 54341290	3,960.09
XEROX CORPORATION 4210	OFFICE EXPENSE 5170	INV. NO.: 154067667,154825640,154825641	1,363.62
ZIND LLC (SAFETY BEE)	EDUCATIONAL EQUIP & MATERIALS 5171	INV. NO.: 2366	1,196.05
BANK OF AMERICA BANKCARD SERVICES	ENTO/LAB SUPPLIES, EQUIP & SER 5115	REF. #: 3516,4772,9329	212.14
BANK OF AMERICA BANKCARD SERVICES	EQUIPMENT REPAIR 5127	REF. #: 352,545,1083,1418,3158,6532,7325,8611,9302,9576	1,356.77
BANK OF AMERICA BANKCARD SERVICES	BLDG. MAINT. 5135	REF. #: 0021,0516	1,506.01
BANK OF AMERICA BANKCARD SERVICES	CONFERENCES, MTGS, TRAIN-TRS 5162	REF. #: 1841,3736,6587	513.59
BANK OF AMERICA BANKCARD SERVICES	CONFERENCES, MEETINGS, TRAIN - STAFF 5163	REF. #: 8528	21.00
BANK OF AMERICA BANKCARD SERVICES	OFFICE EXPENSE 5170	REF. #: 1630,1804,1986,3493,5274,7073,7991,8478,9360,9945	3,639.32
BANK OF AMERICA BANKCARD SERVICES	EDUCATIONAL MATERIALS & EQUIP 5171	REF. #: 0977,1162,3482,5383,6228,7750,8092,8294,8860,9615	3,692.50
BANK OF AMERICA BANKCARD SERVICES	GASOLINE 5251	REF. #: 1340,1729,4481,4487,7921,8425	350.72
	TOTAL BILLS & SALARIES:	PERIOD: APR. 21 TO JUN. 20, 2018	1,477,695.94
ACCOUNT TRANSFER (LACIF P81 ACCOUNT TO BofA MONEY MARKET ACCT./PAYROLL ACCT. #1465-01313)			1,000,000.00

5. Construction Update for 6720-6740 Centinela Avenue.	
Staff Report:	Robert Saviskas, Executive Director
Recommended Action:	Advisory



Los Angeles County West Vector & Vector-Borne Disease Control District

EXECUTIVE STATUS REPORT

May 05 through July 06, 2018

For:

Operations & Storage Facilities

6720-6740 S. Centinela Ave.

Los Angeles, CA 90210

Phase III:

Construction of New

Operations & Storage Facilities

EXECUTIVE SUMMARY:

This report covers the progress of the LA County West Vector Operations & Storage Facility project construction, from May 05 through July 06, 2018.

For the purpose of this report, the General Contractor, Fast-Track Construction & Ruiz brothers JV, will be referred to as "GC".

May 2018

Work accomplished during this period:

- Finish site drainage and concrete placement.
- Finish fish tank and equipment installation and testing for leaks and problems.
- Continue with paint preparation and primer application
- Finish remaining CMU walls
- Continue with bathroom fixtures and partition installation
- Continue with plumbing fixtures installation
- Finalize and approve water and power service reel mockup
- Begin negotiate and coordinate with SCE and LADBS electrical inspectors to agree on a methane sealant method.



FINISH SITE DRAINAGE AND CONCRETE PLACEMENT.

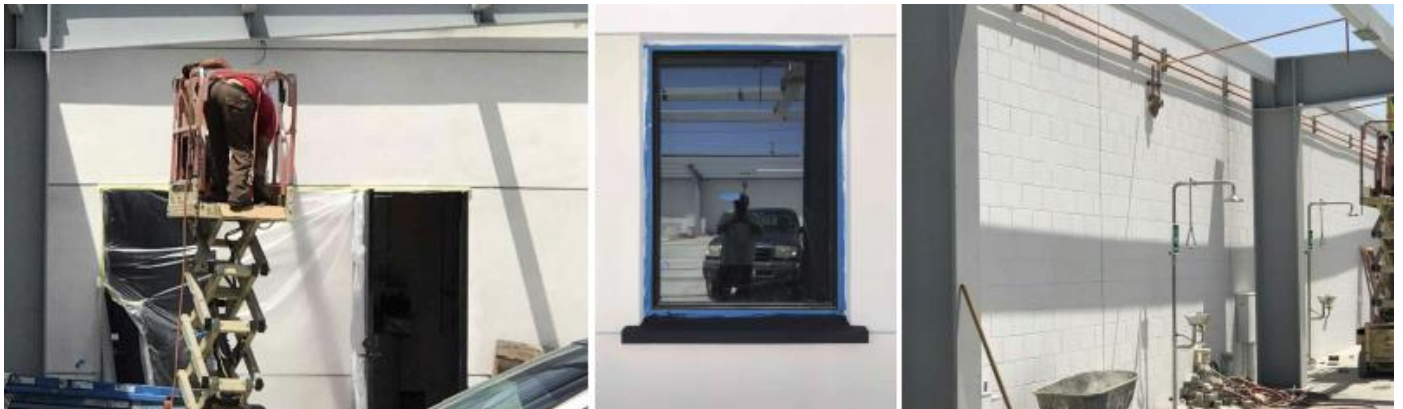


FINISH REMAINING WALLS

June/July 2018

Work accomplished during this period:

- Meeting with parking canopy contractor -Kalwall panels
- Continue negotiation with SCE and LADBS-Resolve issue and obtained inspection and release of power
- Finish carwash
- Finish storage sinks & faucets
- Continue with painting preparation and painting
- Install hose reel backing plates
- Install Site Utilities/lighting
- Emergency shower/eye wash units
- Flood and re-inspect roof
- Finish seismic joints
- Reinstall east canopy
- Finish Gutters and down spots
- Install stair hand rails
- Start parapet coping installation/painting



CONTINUE WITH PAINTING PREPARATION AND PAINTING



INSTALL HOSE REEL BACKING PLATES



FINISH INCOMPLETE CONC SITE WORK



EMERGENCY SHOWER/EYE WASH UNITS

CONSTRUCTION SCHEDULE

Note:

This schedule is based on the latest overall schedule delivered to Arc on May 16TH, 2017. It is Arc's assessment that the project is further delayed by additional (2) months (through end of October 2018) due to delays on the GC's part for lack of scheduling the project and disagreement between LADBS and SCE electrical inspectors over methane gas prevention method from entering the building via electrical conduits. Arc's interference resolve the issue for the inspectors and GC has been directed to mitigate the delay and provide an overall schedule.

Arc has produced the attached schedule based on the current activities.
See the entire schedule on the next page.

3-WEEK LOOK AHEAD SCHEDULE (GC)

FAST-TRACK CONSTRUCTION

Project: West Vector Storage Facility
 Project No. 1372018
 Installation Schedule No. 001
 4 Week Look Ahead - 6/25/2018 thru 7/22/2018

June 25, 2018

Activity	Date	6/25	6/26	6/27	6/28	6/29	6/30	7/1	7/2	7/3	7/4	7/5	7/6	7/7	7/8	7/9	7/10	7/11	7/12	7/13	7/14	7/15	7/16	7/17	7/18	7/19	7/20	7/21	7/22
1 Paint exterior stucco (partial)																													
2 Architectural sheet metal / gutters																													
3 Installation of lighting and controls (exterior)																													
4 Golden State Water to release to construction division																													
5 Install 1st floor concrete slabs																													
6 Install 1st FRP mezzanine panel																													
7 Install epoxy flooring in elevator cab																													
8 Install door sweeps and thresholds																													
9 Complete electrical in machine room																													
10 Complete site plumbing																													
11 Install grating steps and brackets																													
12 Install N.E. planter and do-aid ramp																													
13 Ball to start storm drain tie-in																													
14 Ball to start storm drain tie-in																													
15 Golden State Water to install Fire Water																													
16 Golden State Water to install Fire Water																													
17																													

Legend:
 On Track
 Delayed

6. Board of Trustees Comments

Staff Report:	None Scheduled
Details & Reference Documents:	No Attachments
Recommended Action:	As determined by the Board

7. Motion to adjourn

Staff Report:	None Scheduled
Details & Reference Documents:	No Attachments
Recommended Action:	Approve

**Minutes of the
Board of Trustees' Meeting
July 12, 2018
Los Angeles County West Vector & Vector-Borne Disease Control District**

Trustees Present:

Bill DiSalvo
James Osborne
Jay Garacochea
Nancy Greenstein
Jim Gazeley
Chad Blouin
Barbara Barsocchini
Olivia Valentine
Kurt Weideman

Trustees Absent:

Bill Ailor
Velveth Schmitz
Joan Yacovone
John Frazee
Elizabeth Sala

Staff/Advisors Present:

Robert Saviskas, Executive Director
Teri Roa, Assistant Director
Trevor Ruskin, General Legal Counsel

1. Approve the 2018-2019 Budget & Benefit Assessment Resolution

Motion by: Gazeley
Second: Blouin
Vote: Ayes: 9
 Noes: 0
 Abstentions: 0

Action: Motion Passed

2. Approve minutes of the May 10, 2018 Board of Trustees Meeting

Motion by: Greenstein
Second: Gazeley
Vote: Ayes: 8
Noes: 0
Abstentions: 1 (Weideman)

Action: Motion Passed

3. Executive Director's Report for June 2018

- A) WNV & Zika Virus Update
- B) Public Education Program
- C) Field Operations Program
- D) Vector Ecology Program

Action: Received & Filed

4. Financial Report for May-June 2018

- A) Investment Report**
- B) Bills and Salaries**

Motion by: Gazeley
Second: Garacochea
Vote: Ayes: 9
Noes: 0
Abstentions: 0

Action: Motion Passed

5. Construction Update for 6720-6740 Centinela Ave.

Received & Filed

6. Motion to adjourn

Motion by: DiSalvo

Second: Gazeley

Vote: Ayes: 9

Noes: 0

Abstentions: 0

Action: Motion Passed

Approved by the Board of Trustees

Olivia Valentine, Secretary

Date